

Editor honored
by Managers

See Below

Tree lighting
set for Sunday

See page 3

Varsity Club
photos, article

— see sports, pgs. 13 & 14

Belleville Times

84th Year No. 1

An Orechio Publication

Serving Belleville Since 1909

Thursday, December 17, 1992

50¢

60 houses damaged, 40 trees downed, roads flooded in worst autumn storm to hit Belleville in century



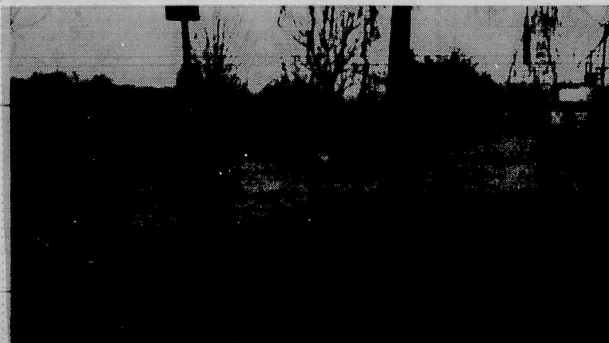
AT THE HELM - Belleville Township Manager Stephen Cuccio confers with police during clean-up drive after storm. (Photo by Howard Klausner)



TYPICAL SCENE - Tree lies across Belleville street, its branches just missing house on other side.



OLD FRIENDS GONE - Councilman Tom Spillane saw the loss of two large trees, one with a five-foot-diameter trunk, behind his house on Lloyd Place.



THE RIVER ROAD - Main Street at the Nutley line was hubcap high in water as the rains continued on Friday. (Photo by Al Cook)

By Howard Klausner

The light rain that began on Thursday night, Dec. 10, developed into a torrential rain that was accompanied by hurricane force winds, forcing water into roads and sending trees crashing into houses.

With Route 21 and Main Street under water, and power outages occurring in virtually every part of Belleville, Township Manager Stephen Cuccio declared a state of emergency at 3:11 p.m., stepping into his role as director of the activated Office of Emergency Management.

All 60 members of the Department of Public Works, 65 firefighters and 80 police went into around-the-clock service.

The Fire Department's Mobile Control Post was called from one location to another.

Vital services continue to function. Superintendent of Schools allowed parents to take their children home earlier in the day, and provided teacher supervision of children who remained in the schools after class, until their parents arrived.

Welfare Director Carol Ann Russo, moved to the Washington Avenue Fire Station, prepared to receive families from evacuated houses. Arrangements were made with the Ramada Inn in Clifton to receive any homeless families, but the temporary shelter was not needed, as residents of 14 tree-damaged houses found lodging with relatives or friends.

She stayed on duty until 10 p.m. that night.

While an estimated 40 large trees and unnumbered smaller ones came down, the heaviest damage occurred on Prospect Place, where trees fell on homes at 69, 71 and 73.

Severe damage was done to

Street, bringing the Hazardous Materials Squad into action to dam the flow with sand.

The Third River further eroded its banks, and water made Main Street impassable. Traffic on Route 21 was halted.

By nightfall, traces of snow appeared, and the snowfall continu-

Call this number for help

Please report any damages caused by the recent storm, including flooding, fallen trees, roof damage, automobile damage and power and telephone lines down to the Fire Department, (201) 450-3367, as soon as possible.

homes at 105 Liberty, 108 Crest Drive, 215 DeWitt Ave., 47 Malone St., 187 Joralemon St., 129 Cedar Hill, 425 Franklin Ave., 187 Garden Ave., 95 Mt. Prospect and 48 Van Houten Ave.

The popular Christmas Village maintained for many years by the Auremma Family on Mt. Prospect Avenue was at first thought to be destroyed, but it was quickly restored when the storm passed.

At 2 and 6 Rutgers Road, trees fell on parked cars. A tree that fell at the corner of Van Houten Avenue and Hornblower Avenue brought power lines down.

Downed lines threatened homes at 168 Bremond, 204 and 214 Little St., 16 Carolyn Road and 52 Baldwin St.

No major fires were reported, but a flow of toxic waste emerged from a storm sewer on Bella Vista

ed through Saturday. By then, the winds had slackened.

The Passaic River swept debris onto the highway, covering the ramp at the North Arlington Bridge.

Through it all, exhausted DPW workers stored up trees, cordoned off streets where pavement had been broken up by raging waters and prepared for the cleanup job to follow.

The two days of wind, rain and snow ended with no reported injuries.

Hundreds of homes had sustained some degree of damage, but no major power failures had occurred, and as the waters receded, traffic returned to the main highways.

Many Belleville residents, commuters to New York City, reported having greater difficulty reaching and leaving the city than travelling through Belleville.

Managers honor Times editor for excellence in reporting

By Karen Lynch

Howard Klausner, editor for the past year and a half of the Belleville Times, has been honored with the New Jersey Municipal Managers Association's first Press Award.

Klausner was presented with a plaque at the association's awards luncheon Thursday at the Ramada Inn in Clark. Nearly 100 municipal managers and associates attended.

NJMA awards committee chairman Alan Feit cited the editor for his "objectivity, consistency and commitment to factual reporting" of events in Belleville leading to the dismissal of manager Bertrand Kendall.

After review of Belleville Times stories on the subject, the committee unanimously agreed Klausner deserved the award, Feit stated.

"The situation began this summer, when it became apparent the new council majority wanted to get rid of the township manager and the staff he had painstakingly built," Klausner said in a follow-up interview.

"He wanted to give Belleville a professional administration, and they wanted a political administration."

Klausner also said violations of the Faulkner Act had occurred in administration members' interference in the day-to-day operations of the town, "leading to confrontations with the mayor and council majority."

"This is about a free press," Kendall told his colleagues at the awards luncheon.

"Unfortunately, they took on Orechio Publications when (Klausner) was just reporting the truth."

"We had a mayor who, when people came in her presence, asked them to remove their jackets to see if they were wired...and tried to get them fired."



TAKING THE PLAQUE - Belleville Times Editor Howard Klausner, left, receives Press Award from Alan Feit of the New Jersey Municipal Managers Association. (Photo by Arnie Zein)

"Fortunately, we have a free press, and (the press) prevailed."

Klausner, in accepting his award, noted "unfortunately," he was not successful in saving Kendall's job.

"The forces of politics overcame the forces of decency," Klausner said.

But he praised publisher Frank Orechio for supporting ongoing coverage of events in Belleville as they unfolded.

"Mr. Orechio has a lot more

courage than 88 percent of the publishers in the state," Klausner said.

Orechio, who attended Thursday's luncheon, said he was pleased Klausner's efforts had been recognized.

"He was objective and truthful in his reporting, and no one can ask more of a journalist than that," the publisher said.

"I'm proud to have him on the staff of Orechio Publications."

Aside From That

By: Howard Krummer

Barbara Tuck, who is Manager of Anything That's Important at the Belleville Municipal Building, reports having her hands filled with the goings on in her subterranean office, during the weekend of storm and flood. It seems that Baldassaro DiVincenzo Mitten, Official Cat, had commanded the telephones, ordering assistance to the location of fallen trees. "Do you realize how many families of squirrels have lost their homes to this disaster?" Baldassaro shouted as Mrs. Tuck tried to pry him loose from the telephone. "Right now, I've got S.O.S. - Save Our Squirrels - on the phone, and they're arriving with emergency supplies. The entire winter stock of nuts has been lost on many streets!" ••••• Mrs. Tuck remonstrated, "How do you expect to find housing for a bunch of displaced squirrels?" she asked. "Don't worry, I got a list of every attic in town," Baldassaro said. "Now, get away, lady. You bother me!" (Being half Irish and half Italian, he is romantic on one side, reckless on the other and argumentative on both.) So Mrs. Tuck went upstairs to call the cops, but they were all out on storm duty. ••••• Both Chester Prosperi, the Democratic Chairman, and Toni Marrone, the Republican Chairman, claim that they never heard of Fifth Ward Councilman Harry Zilch. "He's no Democrat," says Chester. "And he never filed as a Republican," says Toni. Of course, Zilch is not affiliated with either

CORBO PROMISES

Melt Her Heart Away
with a 14k Gold & Diamond Pendant
1/2 ct twd/\$499, 1 ct twd/\$849, 2 ct twd/\$1769
* All diamond weights are approximate

Carbo Jewelers
A Tradition in Fine Jewelry

Brock Plaza, Bricktown (908) 477-5232 • Bloomfield Ave. Clifton (201) 777-1635
Bergen Mall, Paramus (201) 843-5300 • Park Ave. Rutherford (201) 438-4454
Rockaway Town Square Mall, Rockaway (201) 328-0200
Cross County Shopping Center, Yorkers (914) 423-4900
Ocean County Mall (908) 240-8910

An Orechio Publication

major party. His prime base of support has come from the Kool Kumber Boys, otherwise known as the K.K.B. This is a group of vibrant young taxpayers who argue that taxes should go up, not down. When Councilman Zilch voted on the proposal to raise the salary of Township Manager Stephen Cuccio from \$60,000 a year to \$80,000, Zilch wanted it to go to \$150,000. "After serving two years with Wayne Mayor Newton Miller, the poor man deserves it!" Zilch said. ••••• The K.K.B. has as one of its slogans, "Any surplus is a sign of sloppy administration!" At every Township Council meeting, its members are on hand to harangue the Council. One of its leading spokespersons is Hans Brinker Spendmeister who recently told the Council that he had found township employees at their desks after 4:30 p.m. "They were working on their own time!" Spendmeister shouted. "The taxpayers should be ashamed of themselves, accepting free overtime work!" ••••• Anyone hear of Honeywell and Roberts a self-styled investment firm in Las Vegas, Nevada that seems to be milking people in New Jersey? A Belleville man invested \$2 in a "contest" sponsored by the firm. He was informed that he had won \$10,000. And then he received the promise that if he reinvested the \$10,000 with the firm, he would earn far more. And please send some additional money to clinch the investment. ••••• Well, that was three years and \$2,500 ago. Instead of cash, the Belleville retiree has received scores of letters telling him he had to put in a few dollars more in order to keep his winnings. At the same time, the promised \$10,000 has been revised downward to less than \$5,000 - and still no money is forthcoming. "And they've put me on some kind of sucker list," the Belleville man said. "I get mail from people wanting to sell me something, or to invest in another contest. Hundreds of letters!" ••••• He even tried his luck with a "free" contest in Australia, where the prize was \$15,000. Sure enough, he was told he had won the \$15,000, but if he invested a little more, he could earn far more. This time, the Belleville man asked for the money, instead. And so far, all he has received is more mail and more promises. We wonder if any other Belleville people have become involved in these "contests" - where the only winner is a post office drop.

On one of his final days in office - perhaps the day before the end of his term - Governor Richard Hughes gave us a lift in his official limousine as he toured North Jersey for the last official time. We were on Route 17 in Bergen County when he decided to visit a favorite destination, Fat Mike's Hot Dog Stand. A hot dog was one of his few dissatisfactions. He talked about the enjoyments of holding public office, and he

Free Quotes
History Public

Member Delaware
Chamber of Commerce

★ AUTO Immediate Coverage
★ HOMEOWNERS/TENANT
★ BUSINESS/WORKERS COMP.
ALL YOUR INSURANCE NEEDS
COME IN FOR FREE QUOTES

TROISE
INSURANCE AGENCY INC.
"Where Quality Counts"
172 Washington Avenue, Belleville
749-4100
HOURS: Mon.-Tues.-Wed.-Fri. 9:30-5:30
Thurs.-9:30-6pm
Sat. Evening by appointment only

Charles Danick
"mens wear"
SHOES \$59
JOG SUITS \$69
SILK SHIRTS \$39
SILK JACKETS \$49
667-4440
NUTLEY CENTER
OPEN EVENINGS
TILL 9:00 PM

indicated that he considered one of his most memorable achievements the hosting of the historic meeting between President Lyndon B. Johnson and Soviet Premier Alexei Kosygin at Glassboro College. As Governor, Hughes had been a prime mover in establishing the Community College system in New Jersey, a state which used to export most of its college students to the rest of the country. He was one of the few residents of the Statehouse who had the fond regard of most of the press corps.

When a Belleville cop heard that the Civil Service promotion test results may be in on March 15, he groaned, "On St. Patrick's Day? This is discrimination against the Irish!"



AMONG THE FIRST — John F. Lynch, right, shown with Major General Rees at historic promotion ceremony at Pentagon.

John Lynch becomes Master Warrant Officer

John F. Lynch, son of Kathryn and John Lynch of Belleville, was recently promoted to the newly authorized grade of Chief Warrant Officer, W5. Lynch is one of six warrant officers to be the first promoted to this rank within all of the uniformed services, Army, Navy, Air Force and Marine Corps. Lynch graduated from St. Peter's Grammar School in 1949, Belleville High School in 1953, Essex County College in 1974, and received his baccalaureate degree from Park College in 1983. He recently completed the eight week Master Warrant Officer Course conducted at the Warrant Officer Career Center, Fort Rucker, Alabama. He has five daughters and five grandchildren living in New Jersey and a step-daughter living in Virginia. Lynch is currently on active duty and is assigned to the Pentagon as the Army National Guard Warrant Officer Programs Manager for over 9,000 Army National Guard Warrant Officers. He has more than 39 years service with the New Jersey Army National Guard.

A.S.E. CERTIFIED
BRAKE SPECIALIST
O' Betsy
Auto Repairs

Over 25 Years Experience
• Snow Plowing
• Auto Repairs
• Lifetime Brakes
Lifetime Guarantee on Brakes
504 Washington Ave.
Belleville, N.J.
(201)759-5561

ART
GALLERIES
ROYALE
500 STUYVESANT AVE.
LYNDHURST, N.J.
438-3075

OIL PAINTINGS
Large Selection On Display
Largest Gallery in New Jersey
Lithographs & Prints
Photos Painted on Canvas
Stock & Custom Frames
Complete Framing Department

HOLIDAY
DENTAL SAVINGS
SPECIAL HOLIDAY
OFFER
A Complimentary
Oral Exam
And Special
Treatment Fees
Call for Details "NO-PAINO" (667-2466)
James D. Muglia, DDS,BA,FAGD
18 Years of Treating & Beautifying Smiles
• Family • Cosmetic • Restorative Dentistry
24 Hours Emergency Service

Smile Today
10 Franklin Avenue • Nutley
Dial "NO-PAINO" (667-2466)

SHOP
CENTRE
STREET
FIRST!!

Nutley's
"One Stop Shopping Place"

• Centre St.
Seafood
• Centre
Liquors

CENTRE
LIQUORS
HOLIDAY SPECIALS
Specials Good thru Tues. Dec. 22nd

Santa Margherita Pinot Grigio \$12.99 750ML	Moison Gold or Light \$13.99 24 12oz. Bottles	Sambuca Roinana \$14.99 750ML
Ruffino Riserva DuCale \$9.99 750ML	Budweiser \$10.99 12 12oz CANS	Johnnie Walker Black \$16.99 750ML
Martini & Rossi Asti Spumante \$7.99 750ML	Miller Lite \$10.99 12 12oz CANS	Smirnoff 80° Vodka \$9.99 1 Ltr.

92 Centre St. • Nutley 661-4990
Open: Mon.-Sat. 10am-10pm Sun. 12pm-5pm

CENTRE STREET SEAFOOD
Retail and Wholesale Distributors
94 Centre St. Nutley • 284-1182
FRESH SEAFOOD DELIVERED DAILY

eels	fillet	crabs
baccala	shrimp	calamari
smelts	lobster	blowfish

KING CRAB LEGS \$8.99/lb.

Visit our new Freezer Dept.
Delicious Homemade Products Including:
Stuffed Flounder 3/\$14.50
Stuffed Clams 6/\$4.50
Stuffed Mushrooms 12/\$6.00
Stuffed Shrimp..... 6/\$9.00

Place Your Holiday Tray Orders Early!
Shrimp • Salads • Crabmeats
OPEN: DEC.14-19, 8AM-7PM • SUN. DEC.20, 10AM-6PM
DEC.21-23, 8AM-9PM • OPEN CHRISTMAS EVE 8AM-6PM



GREETING SANTA CLAUS - Escorted by Belleville Fire Department, Santa arrives in Belleville, met by, from left, Angie Paserchia, Paul Goodman, two children and Eileen Brown.



THE SENATOR BEAMS - A smiling Senator John Scott, left, with Amanda Cox and her Dad, at the Chamber of Commerce Christmas party.

Tree lighting rescheduled

The Belleville Celebrations Committee has announced that the lighting of the Christmas tree at the Belleville Rec House will be held at 6:30 p.m., Sunday.

The lighting ceremony was rescheduled because of last weekend's storm.

The 50-foot blue spruce has been

donated by Senator John Scott. Winners of the Grade 3 through Grade 6 essay contest on the theme, "How Would I Bring Peace on Earth?" will light the tree.

There will be traditional carols, photos with Santa Claus, hot chocolate and candy canes.

Wrangler RUGGED WEAR

The most comfortable jeans known to man.



Naturally Comfortable

Clothing can be stylish as well as comfortable. The Wrangler Sportsman Pant is smart active wear at its best. Double pleated and washed for softness, it's a relaxed look that's even better with a woven cotton shirt. Wrangler's casual dressing will take you anywhere.

ATLANTIC
uniform co.

Everyday Low Price
\$29.95

444 Washington Ave., Belleville
751-1242

• Workclothes • Uniforms • Footwear • Large Sizes • Corporate Accounts

OPEN: Mon.-Fri. 9am-8pm Sat. 9am-6pm
★ OPEN SUNDAYS 12pm-5pm ★

Tired Of Watching The Same Old Soap Opera?



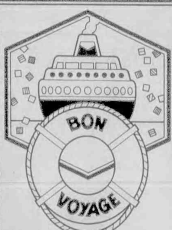
Come Clean With Us!

Tune in to the best full service/self-service laundromat in town. We do laundry by the pound!

- Clean, Brightly Lit, Safe
- Attended At All Times
- Modern, Well-Maintained Machines
- Divergent Machines For Comforters & Drapes
- Plenty Of Free Parking
- Wash-Dry-Fold Service

OPEN: MON.-FRI. 8am-9pm
SAT. 7am-6pm SUN. 7am-5pm
Nutley Clean Scene Laundromat
104 Franklin Ave, Nutley
235-9691

Enjoy Complimentary Coffee Sat. & Sun.

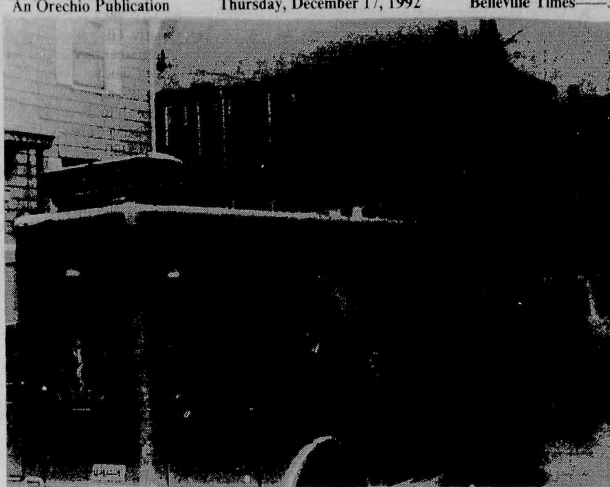


Savings up to
50% OFF
on 1993 Cruises
(subject to availability-
certain restrictions apply)

CALL:
Jaye Tarantino
for details
201-736-5550

traveltime

Essex Green Plaza
West Orange, NJ
"A full service travel agency"



NEW ON THE JOB - The Clara Maass Mobile Intensive Care Unit has a state-of-the-art vehicle which enhances the ability of medical personnel to give life saving emergency care.

Video Repair Express

Having a
Problem With
Your V.C.R.?

FREE Pick-up
FREE Return
FREE Repair Estimate

Senior
Citizen
Discount

90 Day Guarantee on Repairs • Most Repairs Done In 48 hours

V.C.R. Cleaning \$14.95 Reg. \$29.99

Call Video Repair Express
(Video Tonite)

11 Ridge Rd., North Arlington

997-4141



Charles Jewelers

For over 46 years, Charles Jewelers, a leading gemologist and one of New Jersey's largest pawnbrokers, has offered an enormous inventory of fine jewelry at discount prices. We stock diamonds, precious and semi-precious stones, pearls, 14K gold chains, rings, bracelets, watches and more!

Every day is right for visiting Charles Jewelers because we're a full-service jeweler offering a complete line of services—all under one roof, including:

- ♦ Repairs of all kinds
- ♦ Complete refinishing
- ♦ Custom jewelry design
- ♦ Free ear piercing
- ♦ Diamond Setting
- ♦ Buying and selling of estate jewelry
- ♦ Appraisals
- ♦ Gold buying
- ♦ Pearl restringing
- ♦ Remounts

"Where Quality Comes First"

163 Washington Avenue • Belleville, NJ
across from Belleville Town Hall — Since 1946

(201) 759-2468



HOLIDAY STORE HOURS

Mon - Sat
9:30 am - 7:00 pm
Sun. 'til 3:00 pm

OPEN CHRISTMAS EVE



OUR OPINION

An unfortunate snub

State Senator Ray Lesniak, State Chairman of the Democrat Party reached into Essex County and appointed three Newark residents to the New Jersey Bill Clinton Transition Team, totally ignoring the Office of the County Chairman, County Executive Tom D'Alessio.

It is apparent that Chairman Lesniak must have had a mental lapse, for no state chairman ignores the office of his County Chairman, especially when the county in question delivered the greatest majority for the President-elect.

Essex County Chairman Tom D'Alessio delivered a ringing 60,000 majority for Bill Clinton, and in the process, making State Chairman Lesniak look good. Lesniak has enough experience in state politics to know better.

D'Alessio is a major player on the state Democrat political scene, and the consequences of leaving D'Alessio out of the loop by the State Chairman may be very consequential.

Belleville met challenge

The nor'easter that swept through Belleville over the weekend left a trail of destruction and peril unparalleled in most of this century.

Falling trees, downed high tension wires and onrushing floods of water are all life threatening. Fortunately, there was no known loss of human life due to the storm, although the danger of heart attacks and exhaustion is inherent in this kind of disaster.

Belleville met the challenge well. Credit must go to Township Manager Stephen Cuccio who had his baptism of fire - and water - in this episode.

He acted promptly in declaring a state of emergency and he led the Office of Emergency Management as it co-ordinated the township agencies to meet the crisis.

The people of Belleville responded well. Neighbors rushed to help neighbors. Families that had to evacuate their houses quickly found lodging with friends or relatives.

The public safety organizations - the police and firefighters, and the Emergency Medical Service of the Fire Department - worked around the clock to answer calls for help and meet the demands of the moment.

And most of all, the Department of Public Works proved to be the hero - or heroes - of the day.

The DPW responded to more than 60 calls from locations where storm damage had occurred.

The storm damage became so great that it was impossible to be everywhere and anywhere at the same time.

Yet families were evacuated and trees were removed, floods quarantined and fires prevented.

No doubt, at future sessions of the Township Council, there will be those who will protest the overtime pay owed to the public safety and public works people, as memories of the danger and the difficult labor recede.

But from this vantage point, any amount of money paid to the men and women who performed faithfully and even heroically, will be small compensation for their service.

And we should all be thankful that the only loss was measured in property damage. You can always repair property and restore services.

Well done, Belleville.

Another school achievement

We take so many of the achievements of our schools for granted that we often forget to take formal note of them.

But more is done each day in each school for our children and our community than we can even hope to report.

Just one example is the eye on the world opened to our children by Teacher Ann Schneider who returned recently from the Republics of Russia and Ukraine with an insight into the schools and society of those two important nations.

In some communities, she was the first American to visit in more than half a century.

She brought back pictures and information of Russian students and teachers which offer great hope for our future relations, just as they indicate great challenges.

It is obvious that America must act to prevent the closing of the door to democracy in the former Soviet Union.

But whatever material aid is sent, and whatever guidance we may provide, the opening of person-to-person contact is equally important.

YOUR OPINION

Storm-tossed thanks

To the editor:

We often take for granted so many things in life that we have been receiving the benefit of that it is not until an emergency arises that we come to realize that we are blessed. On December 11, 1992 the Metropolitan area was hit with a severe storm. A tree fell on my house causing damage to the roof and to the room below. Within minutes the situation was under control thanks to the police department, the fire department, the town workers and the town officials. They responded to the call, took the proper precautions to assure not only the safety of my family but of the entire neighborhood. They had the tree removed and the roof covered so that we could return to the house the following night.

Never again will I take for granted the services provided by each of you and the departments you represent. To name each of you would be impossible.

To all of the Belleville personnel who were involved I thank you and wish you and your families a happy holiday season and the very best for the New Year.

Nancy Despenzire

Bucs' fans thanked

To the editor:

I would like to thank the fans and parents for the support they showed for us during our 1992 football season. A special thanks to the cheerleaders for all they did. Mrs. Russo too. Also thanks to Mike Lamberti for the pictures and articles on the football team. And thanks to all my teammates for the support they showed for me for team captain, homecoming king and during my senior year on the Bucs. I'm going to miss playing with them. I wish them a great season next year.

Mike Citarella "56"

Also thanks to my brother Joe "49", Good luck next year.

WE WELCOME LETTERS

... of interest to our local area. They should be short and to the point, they must be signed for attribution and contain the address and telephone number for verification.



CREST FALLEN MANOR - The tree leaning on the roof of a pleasant home on Crest Drive was one reminder of storm's visit to Belleville. (Photo by Howard Klausner)



• 1993 will be more important to New Jersey voters than the presidential year we are coming out of.

The Governor, the Senate and the Assembly are all up for election. On the Democrat side, Jim Florio will be renominated without any serious competition. The Republicans will have a battle. During 1992, it appeared there were three

Essex is one of the counties that will be a major battleground for the Republican gubernatorial candidates. The industrious Essex County G.O.P. boss, John Renna, already is charged by his opponents that he has permitted his own town of West Orange to become a Democrat powerhouse, as if Tom D'Alessio's leadership counts for nothing. Spokesman for the Renna opposition claims there are 2,275 registered Democrats vs. 649 registered Republicans in West Orange. The claim is being made that if Renna doesn't have the talent to return West Orange to a basic Republican powerhouse, how can he be expected to stem the Democrat tide in Essex. I examined the list of registered voters, and the facts are as stated above.



Gov. Jim Florio

major Republican candidates - Atlantic County Senator Bill Gormley, Chairman of the powerful Senate Judiciary Committee, Chris Whitman, the lady who almost whipped United States Senator Bill Bradley, and Tom Kean's Attorney General, Cary Edwards of Bergen County. From all outward signs, Bill Gormley will pass up next year's gubernatorial primary.



Tom D'Alessio

Having the registered voters statistics before me, I examined the City of Newark and was surprised at what I learned. The Central Ward has a registration of 25-1 Democrats. The East Ward is 7-1 Democrats. The North Ward is approximately 3-1 Democrats. The South Ward is 35-1 Democrats, and the West Ward is 15-1 Democrats. But oddly enough, the North Ward at 3-1 has the resourceful chairman in the person of Steve Aduabato who is clever enough to obtain more than his patronage entitlement that his ward vote deserves. Diminishing Steve Aduabato's power perception is the fact that North Ward Councilman Tony Carrino probably is responsible for one half of the Democrat votes.



Bill Gormley

• THE Boy Scouts of America rightfully have taken the position that homosexuality has no place in scouting. The secretary general of the world organization of the scout movement recently observed, "We strongly believe that our scout youth should not be a hunting ground for homosexuals." I agree with the policy. The scout organization should resist any effort to include among its active members anyone in the family of homosexuals.

• NOT too long ago, I was shocked to read an old friend of mine, Huntington Hartford, the A&P supermarket heir and arts patron once worth close to \$100 million, filed for Chapter 11 bankruptcy-court protection. According to financial sources, Huntington's annual income is estimated at \$700,000. It results from an \$8 million family trust. During the period that I frequently met and socialized with the man, he impressed me as having no conception of the value of money. In fact, if my memory serves me right, he never handled his money. He left that chore to paid assistants.

• IT'S been a long time since I've seen Nutleyite Geneva Lidlow at Newark's Continental departure counter. This lady was one of the most efficient Continental staff members.

• I HAVE a clip in my files that would make even the hard-hearted feel kindly and warm and sad. I want to share with our readers a newspaper article - it could well be entitled, "An Article of Faith".

"More than 200 people attended a ceremony marking the 50th anniversary of the death of Shep, the faithful sheepdog who waited 5 1/2 years at a train station for his dead master to return. The dog's vigil began in August 1936, when Shep watched baggage men load the casket carrying his master, a shepherd, onto a train. From then until Shep died, the dog met each of the four daily

Nutleyite Geneva Lidlow at Newark's Continental departure counter. This lady was one of the most efficient Continental staff members.

Steve McSweeney, 63, who watched the vigil as a boy, recalled at Sunday's service that Shep never met a freight train. "The story of his devotion was one that touched a lot of people," McSweeney said. Dan Bradley, 64, a Boy Scout who served as a pallbearer at Shep's funeral, also spoke. "There was something special, almost magical, about those encounters with Shep," he said.

Is there any wonder that I have over the years taken the position, if you look for gratitude in life, you buy a dog.

Belleville Times

Serving Belleville Since 1909

(USPS 049-220)

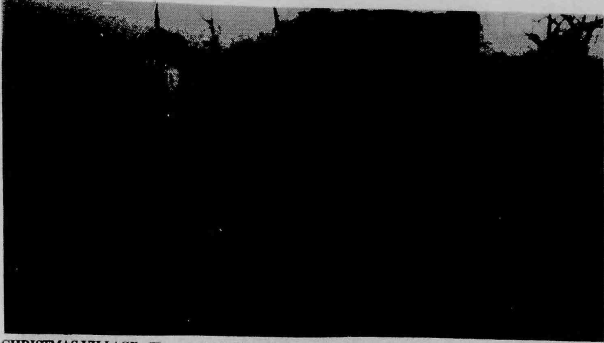
Publisher: Frank Orechio
Arnie Ziem
General Manager
Published Every Thursday
At 155A Washington Ave.
Belleville, N.J. 07109

Second-Class Postage Paid

At Newark, N.J.
Postmaster: Send address changes to:
The Belleville Times, 155A Washington Ave.,
Belleville, N.J. 07109

Editor: Howard Klausner
Social Editor: Helen Maguire
Sports Editor: Michael Lamberti
Advertising: Renee Theodore
Art Director: Diane Lombardy
All departments call:
759-3200
Fax: 667-3904

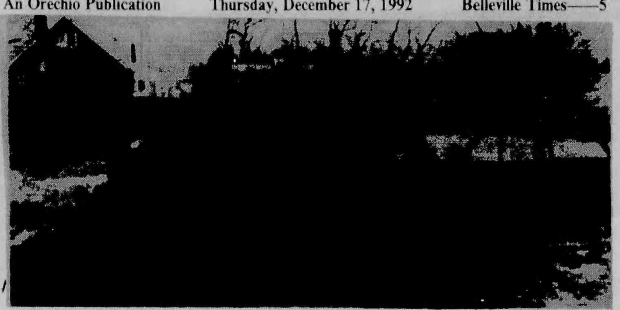
Annual Subscription: \$16.00
Senior Citizens: \$ 8.00



CHRISTMAS VILLAGE - The popular holiday display maintained by the Aurlema Family survived the storm on Mt. Prospect Avenue.



ROARING RIVER - Usually placid Second River was turbulent and foaming during the height of the storm.



DOWN, BUT NOT OUT - The 50-foot Christmas tree at the Rec House will be righted again for the lighting ceremony this Sunday at 6:30 p.m.



STORM REMINDER - Fallen tree on Malone Street house pushed its branches through the attic and bulged a wall.



SANTA AND PAL - A young Belleville citizen discusses Christmas plans with Santa, a close personal friend of Councilman Tom Spillane.

ALLERGY CONSULTANTS, P.A.

ASTHMA STUDY

We are evaluating an inhaler device for a bronchodilator medication for patients with moderate to severe asthma. Patients must be over 12 years of age, and will be paid \$100 for participating in this research study. Call for further details.

ALLERGY CONSULTANTS, P.A.

197 Bloomfield Ave., Verona • 857-0330

Ashley's

a sociable gathering place
PRESENTS

SATURDAY LUNCHEON WITH SANTA CLAUS

Bring the Kids for Lunch at
Ashley's and have their
picture taken with Santa...
With Our Compliments

SATURDAY
DECEMBER
12th
&

DECEMBER
19th
11:30am-4pm



Styertowne Shopping Center
(In Rear Behind Howe Manse)
Clifton, N.J. • 778-2253

LUNCH SERVED

Mon. thru Sat. 11:30am to 4:00pm

DINNER

Mon. thru Fri. 4pm to 9pm

Enjoy A
Delicious
Lunch or
Dinner

W. KODAK JEWELERS
211 Franklin Ave., Nutley, NJ 07110 • 667-4466
Holiday Hours:
Mon.-Fri. 9:30am-9pm, Sat. 9:30am-6pm Sun. 12pm-4pm

Jewelry items and prices shown:

- Heart pendant: \$149.00
- Ring: \$129.00
- Ring: \$99.00
- Ring: \$239.00
- Ring: \$119.00
- Ring: \$110.00
- Ring: \$249.00
- Ring: \$129.00
- Ring: \$99.00
- Ring: \$110.00
- Ring: \$249.00
- Ring: \$575.00
- Ring: \$849.00
- Ring: \$199.00
- Ring: \$745.00
- Ring: \$125.00
- Ring: \$299.00
- Ring: \$695.00
- Ring: \$539.00
- Ring: \$99.00
- Ring: \$119.00
- Ring: \$299.00
- Ring: \$139.00
- Ring: \$119.00
- Ring: \$99.00
- Ring: \$139.00
- Ring: \$4299.00 (D=2.80 ct. S=3.05 ct.)
- Ring: \$249.00
- Ring: \$199.00
- Ring: \$299.00

Accepted

Pre-schoolers need a warmer room



WARM SMILES, COOL ROOM - Youngsters of the Department of Recreation's Pre-School Class do not use this Rec House room often during the winter. Parents say it usually lacks heat.

COUPON SPECIAL
CAR WASH
\$5.50 + Tax
For Full Service

Exterior \$4.75 + Tax
(with this Coupon)
Expires 1/10/93

FRANKIE'S
FUTURMATIC
BRUSHLESS
CAR WASH

305 Broad St. • Bloomfield
748-9459
Open Mon. - Sat. 8-6
& Sun. 8-3

Woman's Club tending trees

Members of the Woman's Club of Belleville are sponsoring two Wish Trees in local churches for Belleville residents.

The trees are decorated at the Silver Lake Baptist Church and Bethany Lutheran Church.

Parishioners take a paper ornament and replace it with a suitable gift for the children and women at The Safe House and the welfare

clients of Belleville.

The chairpersons for the Wish Tree project were Carol Giuffrida and MaryAnn Lopreato. The Jo Lee Nursery donated a live Christmas tree for the project.

Additional Christmas projects of the Woman's Club of Belleville will include 100 canisters of home made cookies, which also will be donated to local residents.

WE HAVE ALL YOUR NEEDS ON YOUR CHRISTMAS SHOPPING LIST

ITALIAN/AMERICAN FOOD SPECIALS...
• ITALIAN SALADS • ROASTED & GREEN OLIVES • MUSHROOMS • PEPPERS • MUSHROOMS • ANCHOVIES • MOZZARELLA • IN WATER • PEPPERONI • SHARP PROVOLONE • PROSCUITTO • BACCALA • FINEST SALAMI • AND MUCH MUCH MORE!

Boneless Baccala \$6.99

COMPLETE SELECTION FRESH FISH...
• LOBSTER TAILS • MUSSELS • JUMBO SHRIMP • SCUNGILLI • CALAMARI • SMELTS • EGGS • SPECIAL ORDERS ACCEPTED

VEAL FOR VEALS, PEPPERS OR STEW
LB. \$3.29

ITALIAN STYLE VEAL CUTLETS
LB. \$5.59

PURE PORK SAUSAGE
LB. \$2.39

SHRIMP
34-50 ct. \$5.99

PIGNOLI NUTS
LB. \$9.00

LOINS OF PORK
BONED & SEASONED \$2.49

NO FAT ADDED CHOPPED MEAT
\$1.89 / \$5.89

PRODUCE DEPT FULL LINE FRUITS VEGETABLES... AND FIGS • WALNUTS...

FROZEN FOODS LARGE SELECTION
• PECORINO/ROMANO MACARONI CHEESE GRADED OR CHUNK \$4.49

HOME MADE BACALA SALAD
LB. \$7.99

PERDUE CHICKEN CUTLETS
\$3.99

BOKOWIEC'S KIELBASA
\$3.39

VITO SYLVESTRO'S GARDEN MEAT MARKET
166 GARDEN AVENUE BELLEVILLE, N.J.
759 1069
FREE DELIVERY
FREE PARKING
WE ACCEPT FOOD STAMPS FOR YOUR PURCHASES

BUY-RITE LIQUOR
NEW JERSEY PRICES EFFECTIVE: WED. DEC. 14, THUR. DEC. 22, 1992
SUPER GIFT SELECTIONS FOR EVERY BUDGET

KORBEL 99¢
CANADIAN MIST 11.99
BEEFEATER 22.99
ALL MADDEN 7.99
MARIE BRIZARD 12.99
ABSOLUT 10.99
SEAGRAM'S CROWN 6.99
BY BEAU TOUR 5.99
FRENCH PIPER 16.99
MOUTON CADET 9.99
FINLANDIA 18.99

CANADIAN CLUB 7.99
KENDALL JACKSON 9.99
JACK DANIEL'S 11.99
CANADIAN CLUB 11.99
JACK DANIEL'S 5.95
JOHN BEGG 16.99
DOMAINE 9.99
GORDON'S 12.99
INGLISCH 7.99
ITALIAN BOLLA 7.99
SOUTHERN COMFORT 6.99
7-UP 99¢

DEWAR'S 13.99
BLENDED WHISKY 12.99
TANQUERAY 11.99
ANTINORI 5.99
HENNESSY 16.99
GRAND MARNIER 20.99
EARLY TIMES 13.99
ANDRE 2.99
LANCERS 3.99
MUM 17.99
CROWN ROYAL 13.99
GALLO 6.99
JOHNNIE WALKER 21.99
BOUCHERON 11.99
C.J. WRAY 10.99
HARVEY'S 8.99
ST. SUPERY 8.99
NAPA CHARDONNAY 8.99
SOUTHERN COMFORT 6.99

WINTERFEST COORS 4.99
BUD LIGHT 9.49
FOSTER'S 1.59
CORONA 4.99

Smirnoff 80° Vodka \$6.99
750 ML
MUST PRESENT COUPON
Cash and Carry
Coupon Expires 12/22/92

Seagrams V.O. \$7.99
750 ML
MUST PRESENT COUPON
Cash and Carry
Coupon Expires 12/22/92

Johnnie Walker Red \$13.59
750 ML
MUST PRESENT COUPON
Cash and Carry
Coupon Expires 12/22/92

Chivas Regal \$16.99
750 ML
MUST PRESENT COUPON
Cash and Carry
Coupon Expires 12/22/92

Sambuca Romano \$14.99
750 ML
MUST PRESENT COUPON
Cash and Carry
Coupon Expires 12/22/92

Drambuie \$20.99
750 ML
MUST PRESENT COUPON
Cash and Carry
Coupon Expires 12/22/92

Fontana Candida Frascati \$7.99
1.5 LT
MUST PRESENT COUPON
Cash and Carry
Coupon Expires 12/22/92

Corvo Red or White \$5.99
750 ML
MUST PRESENT COUPON
Cash and Carry
Coupon Expires 12/22/92

Santa Margherita Pinot Grigio \$12.99
750 ML
MUST PRESENT COUPON
Cash and Carry
Coupon Expires 12/22/92

Bolla-Soave-Valp. Bardolino \$7.99
1.5 LT
MUST PRESENT COUPON
Cash and Carry
Coupon Expires 12/22/92

Coors-Light Reg.-Extra Gold \$10.99
24-12oz Cans
MUST PRESENT COUPON
Cash and Carry
Coupon Expires 12/22/92

Heineken or Amstel Light \$16.99
24-12oz Bottles
MUST PRESENT COUPON
Cash and Carry
Coupon Expires 12/22/92

Molson Golden Ale \$13.99
24-12oz Bottles
MUST PRESENT COUPON
Cash and Carry
Coupon Expires 12/22/92

Beringer White Zinfandel \$4.99
750 ML
MUST PRESENT COUPON
Cash and Carry
Coupon Expires 12/22/92

Glen Ellen Chardonnay \$3.99
750 ML
MUST PRESENT COUPON
Cash and Carry
Coupon Expires 12/22/92

NUTLEY BUY-RITE LIQUORS
558 Franklin Ave. • Nutley 667-1315
Open Mon.-Sat. 9am-10pm
Open Sundays 12pm-6pm
Prices Effective
THIS STORE IS INDEPENDENTLY OWNED & OPERATED Wed. Dec. 16-Tues. Dec. 22
Cash & Carry on all items • All prices subject to sales tax • We reserve the right to limit quantities • Manufacturer's rebates are limited to one rebate per household

Radon information

Many New Jersey residents have concerns about radon levels in their homes. The New Jersey Department of Environmental Protection and Energy has published a new pamphlet, *Information You Should Know About Radon*, which is available at the Reference Desk of the Belleville Public Library. More copies of this brochure are on order for interested residents. For information about radon, call 1-800-648-0394. To arrange for a speaker for your community group, on the topic of radon, call Barbara Sergeant at 609-987-2101.

For information about health hazards, public safety and environmental concerns, the library is a good place to start your research.

Americans with Disabilities Act

The Belleville Public Library has added an important new book to its collection: *Disability Law: A Legal Primer*. The second edition of this useful book, which outlines the basic provisions of the Americans with Disabilities Act (ADA), is a publication of the New Jersey Bar Association and the Essex County Bar Association and its Committees on the Rights of Persons with Disabilities.

This new book is presently for in-library use only, as the library awaits additional copies it has ordered. In a clear question and answer form, people using this primer can determine the accessibility, employment and many legal portions of the ADA. Please ask for this new publication at the reference desk.

Handmade musical instruments

The Belleville Public Library is pleased to display the handmade and hand-painted musical instruments of John Stumpe. Each musical instrument is a work of art, in some cases made by Stumpe from wood cut from local trees. Living in town for the past 27 years, Stumpe attended Arts High School in Newark and is an accomplished guitarist. Combining his love of music and his skill as a designer, woodworker and painter, Stumpe's musical instruments represent beautiful craftsmanship.

This display will continue in the second floor exhibit case throughout December.

Book marks

Library displays work of Sumliner

Mrs. Bebe Sumliner, a resident of New York City, began painting about 26 years ago when her husband, Bernard, bought her a set of oils and an easel as a holiday gift.

Sumliner has worked exclusively in oils using a great variety of subject matter and has recently become interested in water colors. She has exhibited at the Belleville Public Library in 1975 and in 1977 with her mother, Mrs. Essie Cohen, and her niece, Pamela Cohen, and again in 1983. Last June, she exhibited at The New Gallery of the Educational Alliance.

Sumliner enjoys painting with the soft lines and colors, such as those used by the Impressionists, and gets "great satisfaction in facing a blank canvas and creating something that wasn't there before."

Holiday crafts for children

The following holiday programs for children will take place in the James J. Cozzarelli Jr. Children's Room, during December: Make a Holiday Gift, Dec. 19 at 10:30 a.m.; Secret Movie, Dec. 26 at 2 p.m.

All programs are free and open to the public, though the library requests that all children under 8 years of age be accompanied by an adult.

Films at the Library

The popular film series "Thursday Films at the Library" will offer its final 1992 choice on Dec. 17.

The film, *White Christmas*, will be shown. Bing Crosby and Rosemary Clooney star in this delightful holiday romp with music, dance and clowning for the whole family.

Films are shown in the Trustees Room at 1 p.m. each Thursday. Due to the library's scheduled holiday closings, no films will be shown on Dec. 24 or 31. "Thursday Films at the Library" will begin on Jan. 7, 1993.

Holiday hours announced

The Library Board of Trustees has approved the following hours of library service during the Holiday Season:

The Main Library will be open Monday, Tuesday and Thursday 9 a.m. to 9 p.m., Wednesday, Friday and Saturday 9 a.m. to 5 p.m. The Cozzarelli Children's Room will be open Monday 9 a.m. to 9 p.m., Tuesday through Saturday 9 a.m. to 5 p.m.

The Shafter Branch Library located in School Number Four at 30 Magnolia Street will be open Monday through Friday, 1 p.m. to 5 p.m.

All library departments will be closed Dec. 24, 25 and 31, and Jan. 1, 1993.

EIGHT CICCOLINI BROS. PRESENTS:

Last Minute GIFT IDEAS!

180 DAYS SAME AS CASH!
12/18/92-12/31/92
ASK FOR DETAILS.

GECAF Financing for GE Appliances.

GE TURNTABLE MICROWAVE OVEN
Model JET16
7 cu. ft. over easy. Electronic digital display with clock. Time Cook 1 & 1/2 Minute/Second Timer. 10 Power Levels.

GE SUB-COMPACT MICROWAVE OVEN
Model JE48A
573 watts, 4 cu. ft. oven cavity. Easy to use electronic touch controls with digital display and clock.

GE POTSCRUBBER DISHWASHER
Model GSD1200
6 cycles/11 options. 3-level wash action with Multi-Cycle™ wash arm and self-cleaning filter.

GE 50" GAS RANGE
Model JGB730GEP
Upstage cooktop with sealed burners for easy cleanup. Clock and automatic oven timer.

the eight ciccolini bros. inc.
537 Franklin Avenue • Nutley
201-661-2100



VIEW FROM THE MALL: Shoppers at the Main Street Shopping Mall had to ford this water in the parking lot, when the downpour overwhelmed the storm sewers.

Are you ready for some real action?

For boys 6th - 9th grade

Call 622-2488

Monday Friday
9:00AM 4:30PM



Happy Holidays

To Our Customers

FIREHOUSE PUB

Bloomfield & Glen Ridge's #1 Pub

HOLIDAY SPECIAL

3-7 P.M. Happy Hour - Monday - Friday

Appetizers from our Menu 1/2 price

Bar Pie 1/2 price

Domestic Drafts \$.75

Domestic Bottles \$1.50

Import Bottles \$2.00

Well Drinks \$1.75 Call Drinks \$2.25

CHRISTMAS EVE PARTY

The Christmas that was and always will be. The original Christmas that has been in Bloomfield since 1971. Santa arrives at 4:30 P.M., Dec. 24th. Free Buffet for all guests and gifts from Santa for all children. Stop in to see our beautiful decorations and join us for this Christmas Eve Celebration.



From All The Employees
at

THE FIREHOUSE PUB

289 Glennwood Ave. Bloomfield

BOOK YOUR CHRISTMAS PARTIES NOW!

And Reserve Your New Year Dinner Now
complimentary glass of champagne

Mr. Win
chinese seafood house



OPEN FOR
LUNCH & DINNER
FREE Delivery 7 days a week
from 5-10pm

Starting from \$12.95 per person and up
(Minimum 10 to 100 people)
EARLY BIRD SPECIAL 4-6 P.M.
10% OFF DINNER WITH THIS COUPON
MON. - THURS.

*** NEW JERSEY MONTHLY 11/88

"Price Value: Excellent!"
"The Best Chinese Restaurant In The State"
"Most Of What I've Tried Has Been Marked
By Freshness And Toothsome That Is
All Too Rare"

*** THE RECORD 3/24/89

"Introduce You To Elegant Taste
Sensations"
"Confirm The Assessment" rated by N.J.
Monthly for The Best Restaurant In The
State.

528 RIVERSIDE AVENUE
LYNDHURST, N.J. 07071

TEL: (201) 939-8187
FAX: (201) 939-7258

How to decorate a Christmas tree

By David E. Thierer
Cathy Pisciotto, the head decorator at State Fair Christmas Outlet in Belleville, gives the following tips to give your Christmas tree a professional look.

When decorating a Christmas tree, you want to start with the lights. Start at the base of the tree, right at the trunk, keeping the plug at base with enough slack to be able to plug in. Wrap the first light around first shoot on branch, then

bring wire out to the very end of the branch, making sure a bulb is at the very end. Fold end of branch around bulb (if it's a live tree use paper clips). With an artificial tree, bend shoots to hold wires against branch. Run wire back to trunk, and then proceed to other branches, following these same rules. By doing this, the tree is given depth and shape. You should not run more than 300 bulbs end to end because you can blow fuses on the

string of lights, and they usually are not able to be replaced. If you are using an extension cord, you can plug a run of 300 bulbs in each outlet.

The next step would be affixing your topper to top of the tree, making sure it is straight. A good inexpensive topper is a seven-looped bow made of ribbon. If it is an electric piece you are using, make sure you plug in to the light strand, keeping the plug hidden.

The next thing you want to do is to fluff the branches by pulling shoots in opposite directions. For example, two up, two to the side, two down. The branches themselves should run straight out.

Now you want to hang the garland. One good trick is to hang paper clip from the end of the branch or shoot, and drape garland through the clip. If you wish to run many strands of garland, you can run all of them through the same clip. When running garland, the points where they are attached to the tree should be above the loose loops of the level below so a more balanced look is achieved. An inexpensive garland alternative is ribbon. Drape this in the same fashion as you would with any other garland.

At this point you should hang the larger and most expensive orna-


ments. Hang these ornaments on the outside branches so they are displayed prominently. The ideal way of hanging a similar group of ornaments is to arrange them in a diamond pattern. The spacing will vary depending on the size and fullness of the tree.

Now you can hang your inexpensive ornaments. Continue the same diamond pattern with the cheaper ornaments approximately in the center of one of the diamonds you have just created.

The last step would be the hanging of your least expensive ornaments. Hang these ornaments to the inside branches of the tree, filling in the hollow areas. Some examples of filler ornaments can be loops of ribbon, baby's breath (dried flowers), or snow branches (white branch pieces).

When you are using a smaller tree, instead of placing it directly on a table, try wrapping a large box with wrapping paper and a bow (as if it was a gift), and place the box on the floor with the tree displayed on top.

Stop down and speak with Cathy, or any of our other decorators at State Fair Christmas Outlet, 229 Main Street, Belleville. We would be happy to assist you with your decorating needs.



SEIKO

THE WORLD TIMER WITH SEIKO IQ-INTELLIGENT QUARTZ.

Select from 21 cities and the computer-driven subdial automatically indicates the time in selected city.

Also available with white dial.

The Nutley Watch Shop

• Watches • Diamonds • 216 Franklin Avenue, Nutley • Gifts • Jewelry

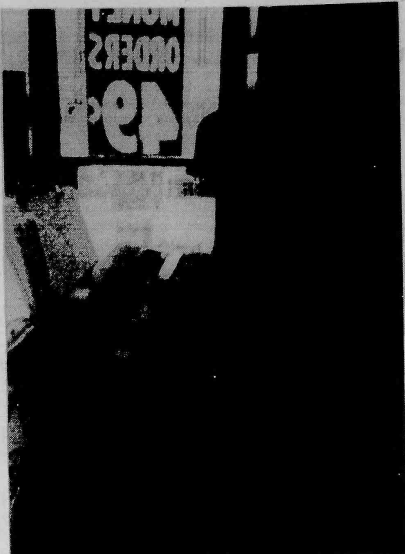
667-2251

Paul & Louise De Venuta
"38 years of quality service and reliability"

THE FUTURE OF TIME



SHARING THE LARGESS - Belleville High School teacher Ann Schneider hands out pins from Russia to members of the Belleville Board of Education.



MUSIC MAKER - The performer is Duke Anderson, and the location is the Charles Jewelry Store, where holiday music came from one of the jazz greats of our time. (Photo by Howard Klausner)



FAIRVIEW MARKET

Quality Deli Meats • Party Platters • Groceries • Lottery

We Carry The Finest Boars Head Provisions at the Lowest Prices!

**Buy 1/2 Sub
Get 1/2 FREE**

must present coupon

Expires 12/31/92

133 Montgomery St. Bloomfield
(201) 429-8337

Attention Howard and Carteret Savings Bank Customers

Is your bank cutting interest rates?

The Best commercial bank in New Jersey Gives you the Top Rate

18 MONTH CD

4.27% 4.15%

ANNUAL YIELD ANNUAL RATE

COMPOUNDED CONTINUOUSLY

Interest compounded continuously. Rate quoted as of publication date and is subject to change without notice. There may be substantial penalties for early withdrawal. Minimum \$1,000.


More Banking Hours Than Any Other Bank

<p>Belleville</p> <p>Corner Main & Joralemon/ Grand Union Shopping Ctr.</p> <p>751-1001</p> <p>Hours Daily 9-7 Saturday 10-4</p>	<p>Nutley</p> <p>Corner Franklin & Vreeland Aves.</p> <p>661-0300</p> <p>Hours Daily 9-4 Thurs. & Fri. 9-7 Saturday 10-1</p>
--	--

THE TRUST COMPANY
OF NEW JERSEY

The Bank with Heart since 1896

40 Branches in Bergen, Essex, Hudson, Middlesex, Monmouth, Morris, Passaic and Somerset Counties
Assets \$2 Billion • Executive Offices: 35 Journal Square, Jersey City, N.J. • Member F.D.I.C.



NOW OPEN

24 - HOURS

365 DAYS - A - YEAR

Pharmacy on duty at all times

Rx 759-4877

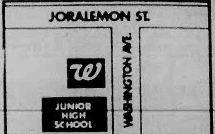
Phone

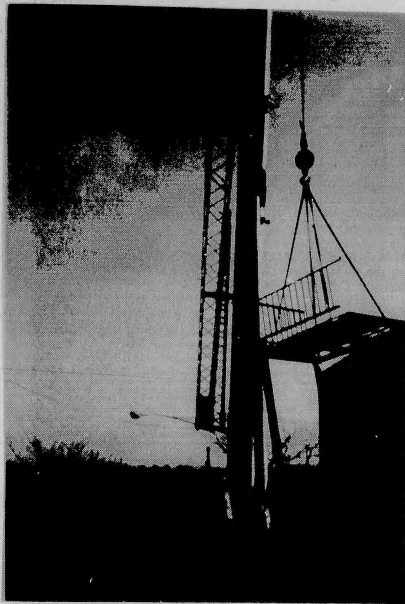
- COMPUTERIZED PHARMACY SYSTEM
- BELLEVILLE'S MOST COMPLETE DRUG STORE
- COMPLETE LINE OF HEALTH & BEAUTY AIDS
- CONVENIENCE FOOD DEPT.
FROZEN - MILK & DAIRY - DRY GOODS
ICE CREAM - ICE - SODA

FREE PARKING AVAILABLE / WE NEVER CLOSE!

**325 WASHINGTON AVE.
BELLEVILLE, NJ**

**Store Phone
759-2666**

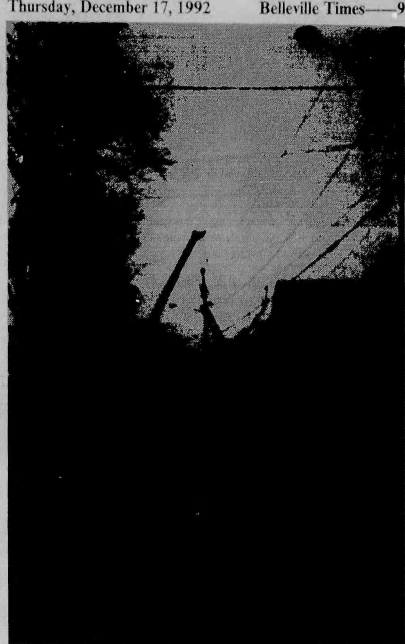




ESCAPEMENT - This rig helped remove old fire escapes from Municipal Building, Monday.



PERCHED TREE - This was the way Malone Street house looked before removal of fallen tree.



REMOVAL JOB - This is how lifting of tree from Malone Street house was accomplished. (Photo by Howard Klausner)

MACE BROTHERS
"Fine Furniture"
STARTING NOVEMBER 27th
Will Offer
3%
Sales Tax

506 Kearny Avenue • Kearny
998-0300

It keeps
more than
memories
alive.

THE AMERICAN HEART
ASSOCIATION
MEMORIAL PROGRAM

1-800-AHA-USA1
American Heart
Association

This space provided as a public service.
© 1992 American Heart Association.



Holiday Savings

SUITS\$169.00 TO \$399.00
(Portlies in Stock) (Values \$275.00 to \$550.00)

SPORTCOATS ..\$99.00 TO \$279.00
(Values \$180.00 to \$350.00)

TROUSERS\$29.00 to \$48.00
(Values \$65.00 to \$96.00)

TOPCOATS & ALL-WEATHER COATS ..\$119.00 to \$249.99
(Values \$150.00 to \$360.00)

JOGGING SUITS ..\$60.00 to \$99.00
(Values \$120.00 to \$155.00)

SWEATERS\$29.00 to \$129.00
(Values \$42.00 to \$160.00)

SOCKS ..\$15.00 a dozen ...Brown, Black, Navy
(Value \$5.00 each ...while they last!)

SHOES- LUCKY SIZES\$25.00 and up



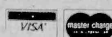
GIFT CERTIFICATES AVAILABLE

'SUIT YOURSELF'

(The Men's Store)
Fashion...Value...Quality...Service

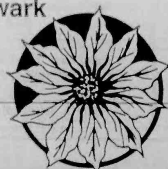
517 Bloomfield Ave., Newark

485-9222



Exit 148 off Garden State Parkway,
then 8 blocks east. (On Bloomfield-Belleville line)
Open Daily 10:00 am to 8:45 pm
Saturday 10:00 am to 5:45 pm
Sunday 11:00 am to 5:00 pm

EXPERT TAILORING DONE ON THE PREMISES
FREE PARKING



MERRY-MAKING MONEY-SAVING
HOLIDAY MARKDOWNS
Arlington Jewelers
261 Franklin Ave. Nutley • 661-1558
Open: Mon. & Fri. 10-8 Tues.-Wed.-Thurs. 10-6 Sat. 10-5 Closed Sundays

GOLD AND DIAMOND LIQUIDATION EXTRAVAGANZA!!
Take Advantage Of Our Lowest Prices EVER No Better Buy ANYWHERE!

SPECIAL SALE ITEMS

Save 40% On every Bulova, Pulsar & Caravel Watch in stock
Save 40-50% On Every Ladies' & Men's 14K Gold & Diamond Watch in stock
Save 50% on every 14K Ladies & Gents Bracelets or chains in stock

	REG	NOW
7. Solid Rope Bracelet	45.00	28.00
16. Solid Rope Necklace	88.00	52.00
18. Solid Rope Necklaces	98.00	59.00
20. Solid Rope Necklaces	108.00	63.00
Ladies Diamond Initial Bracelet	120.00	80.00
Diamond Stud Earrings 1/4 Ct. T.W.	350.00	210.00
Diamond Stud Earrings 1/3 Ct. T.W.	450.00	280.00
Diamond Stud Earrings 1/2 Ct. T.W.	850.00	500.00
Custom Made Name Necklace (Chain Inc.)	150.00	80.00
Diamond Name Bracelet (Handmade)		
Diamond Name Bracelet (Handmade)		
Ladies Name Rings (3 Styles)		
Ladies Diamond Initial Rings		
Mom's Ring		
Girls Birthstone Ring	49.00	25.00
Mini Crucifix Ring	43.00	25.00
Ladies Crucifix Ring	65.00	40.00
Gents Crucifix Ring	80.00	50.00
Giant Diamond Cut Initial Ring	38.00	25.00
Ring w/ Initial Ring	65.00	40.00
Ladies Initial Ring	140.00	85.00

Prices Starting From 150.00
Prices Starting From 150.00
Prices Starting From 99.00 & UP
99.00 to 400.00 50 to 200.00

NUTLEY STORE ONLY

SAVE 40%
OFF REG. PRICE
Large Selection of 14K & Diamond Engagement Ring, Bracelet, & Baguette Chains
Expires 12/31/92
While Stocked At Franklin Ave. Nutley Store Only

SAVE 50%
OFF REG. PRICE
NAME BRACELETS
Reg. \$55 to \$85
\$27 to \$37
Expires 12/31/92
While Stocked At Franklin Ave. Nutley Store Only

SAVE 50%
OFF REG. PRICE
ALL 14K GOLD CHAINS & BRACELETS
Expires 12/31/92
While Stocked At Franklin Ave. Nutley Store Only

SAVE 40%
OFF REG. PRICE
ON EVERY LADIES 14K GOLD & DIAMOND WATCH IN STOCK
Expires 12/31/92
While Stocked At Franklin Ave. Nutley Store Only

PLUS
Diamond Studs, Pendants, Engagement Rings
In All Sizes At Great Savings

FREE
GOLDENING
ON ANY
14K CHAIN OR
RING 14K

\$1
WATER BATTERY
REPLACEMENT
Reg. \$3.00 to \$4.00
Now \$1.00

\$50
ANY 14K DIAMOND
JEWELRY
Reg. \$125.00
Now \$50.00

UP TO 50%
OFF REG. PRICE
ON Selected Gold & Diamond Jewelry
Expires 12/31/92
While Stocked At Franklin Ave. Nutley Store Only

SAVE 30-40%
OFF REG. PRICE
Every Diamond In Stock
Expires 12/31/92
While Stocked At Franklin Ave. Nutley Store Only

EVENTS IN THE AREA

Fairs, flea markets, rummage...

Christmas flea market and craft show, 9 a.m. to 5 p.m. Dec. 19, Nutley High School, 300 Franklin Ave. Over 100 vendors. Fundraiser for Project Graduation. Indoors and outdoors.

Christmas flea market and craft show, 9 a.m. to 5 p.m. Dec. 20, Sacred Heart Center, 655 Valleybrook Ave., Lyndhurst. Fundraiser for Sacred Heart School.

Every Friday night flea market, 4 to 10 p.m., Boy's Club, 156 Schuyler Ave., Kearny.

Fundraisers...

Breakfast with Santa, 9:30 a.m. Dec. 19, St. Thomas the Apostle School, 60 Byrd Ave., Bloomfield. \$6.50. Reservations requested. Call 338-8505. Pictures with Santa, games, magic show, gift from Santa, etc.

Holiday music festival, 3 p.m. Dec. 20, Fewsmith Memorial Presbyterian Church, 444 Union Ave., Belleville. \$8 with reception following. Featuring LaTerry Butler, keyboardist and Tammelyne Butler, soloist. For tickets, call the church office at 759-6869.

Lunch with Santa, 12:30 to 3 p.m. Dec. 20, Nutley Parks and Rec, 44 Park Ave. \$3. Tree decorating, coloring, stories, Santa's mailbox, lap time with Santa. Proceeds to benefit CINDY Foundation. Tickets must be purchased in advance from Nutley Juniors. For tickets, call Maria Russo at 235-0694. No answer, call 284-1016.

New Year's Eve dinner dance, St. Clare's Parish Center, 69 Allwood Road, Clifton. \$25 per person included hot and cold buffet. Early reservations requested. Call 779-7545, 779-1422 or 773-8211.

Belleville Knights of Columbus New Year's Eve party, 9 p.m. to 7. Open bar, Kevin McCauley band. Bring your own food, cake and coffee at 1 a.m. \$15. For reservations, call 759-9656 or 759-5196.

New Year's Eve party, 9 to 7, Bloomfield Elks Lodge, 296 Bloomfield Ave. Hot and cold buffet, open bar, DJ Jimmy Jukebox, prizes. \$35 per person, advance sales requested. For information, call 429-1827 or 429-0343. Everyone welcome.

1993 Entertainment books, \$40. Dystonia Medical Research Foundation, 661-3978 or 956-5351; Good Shepherd Academy, 667-2049 or 667-5081; Sisterhood of Congregation Ahavath Achim, 759-9394; St. Thomas the Apostle Junior H.S. Youth Group, 338-6822; Nutley Lions Club auxiliary, 661-3257; Grace Church, 235-1177.

For singles only...

O.N.E.S., 12:30 p.m. Dec. 20, Bethany Presbyterian Church, High St. and E. Passaic Ave., Bloomfield. Donation: \$5 or food item of equal value for buffet. Christmas party. If you would like to participate in gift exchange, bring \$2 wrapped gift suitable for woman or man. Pastor Jim Henkel will lead carol singing.

ACTS, a young adult Catholic singles group for ages 21 to 35. For information, call 759-9194.

Solo Singles, (40 plus), 6:30 p.m. Sundays, Central Presbyterian Church, St. and Morris Ave., Summit. \$2 Bridge, 7:15 p.m. 1st and 3rd Thursdays. \$3. For information, 908-665-2686 or 908-766-1839 6 to 9 p.m. only.

Mix and Mingle, for separated, widowed, divorced men and women 45 plus, 7 p.m. second Tuesdays, Parsippany library, 292 Parsippany Road. \$3. For information, 887-7833 or 335-7068.

Class reunions...

Bloomfield 1967, needs volunteers to organize reunion. Call Joyce at 743-1901 or Nikki at 677-9200, ext. 107.

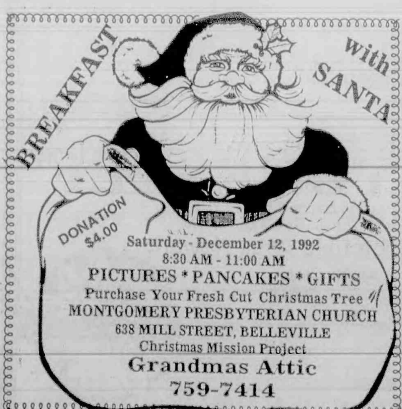
Bloomfield 1963, 1-800-22-CLASS.

Bloomfield 1972, 1-800-22-CLASS.

Bloomfield June 1943, Helen Flannery, c/o Bloomfield High School, 160 Broad St., Bloomfield, 07003.

Nutley 1983, November 1993. For information, call Danny Geltrude, 661-1636; Ellen Travers, 661-2815; Jodi Mastronardi, 772-9665; Jeanette Paterno, (908) 852-3888; Joy Tolve, 284-1949 or Sandy Paterson, 661-0684.

West Side, Newark, 1967, Jan. 23, Westwood, Garwood. WSHS '67, P.O. Box 694, So. Plainfield, 07080.



BREAKFAST WITH SANTA

DONATION \$4.00

Saturday - December 12, 1992
8:30 AM - 11:00 AM

PICTURES * PANCAKES * GIFTS

Purchase Your Fresh Cut Christmas Tree @
MONTGOMERY PRESBYTERIAN CHURCH
638 MILL STREET, BELLEVILLE
Christmas Mission Project
Grandmas Attic
759-7414

Support Groups...

Narcotics Anonymous meeting list: **BELLEVILLE: Monday, 8 p.m.**, Fewsmith Presbyterian Church, Union Ave. and Little St. Openbook discussion meeting: **Tuesday, 8 p.m.**, Clara Maass Medical Center, 1 Franklin Ave., Branch Brook Room, Education Center. Men's meeting. Open discussion: **Thursday, 8 p.m.**, Fewsmith Presbyterian Church, Union Ave. and Little St. Openbook discussion meeting: **Friday, 8 p.m.**, St. Peter's Church, rear basement, Williams St. Open discussion. **NUTLEY: Monday, 7:30 p.m.**, St. Paul's Congregational Church, Franklin Ave. and St. Paul's Place. Closed speaker discussion meeting. Open to addicts and those who think they have a problem with drugs; **Tuesday, 7:30 p.m.**, Grace Episcopal Church, 200 Highfield Lane. Women's meeting. Topic meeting open discussion; **Wednesday, 8 p.m.**, Grace Episcopal. Closed speaker discussion. Open to addicts and those who think they have a problem with drugs.

Rational Recovery, a self-help group for substance dependency, non-religious, non-12 step. Based on self-reliance. 8 p.m. Tuesdays, Montclair YWCA, 159 Glenridge Ave., second floor boardroom. For information, call 759-1316 or 538-1590.

Separated and divorced, 7:15 p.m. Dec. 10, St. Thomas the Apostle Parish Center, 60 Byrd Ave., Bloomfield. Topic: "The church on divorce and annulment." For information, call Father Vic at 338-9190.

Victims/family survivors of auto related crashes, sponsored by Mothers Against Drunk Drivers, second and fourth Mondays, St. Mark's Church, 45 Main St., West Orange. For information, call 344-4329.

Anorexia, nervosa, bulimia, compulsive eating problems. For information, call 1-800-624-2268.

Drug addicts, 7:30 p.m. Wednesdays, Christian Faith Center, 393 Washington Ave., Belleville.

Catastrophic illness support group, 6 to 7:30 p.m. first and third Tuesdays, The Hospice, 34 Label St., Montclair. Separate sessions for families and patients. For more information, call 783-7879.

New Jersey Chapter of NAAFA (National Association to Advance Fat Acceptance, social events, human rights information, monthly newsletter. For more information, write P.O. Box 10203, Nutley, 07110 or call 667-2957.

Overeaters Anonymous, self-help group for compulsive overeaters or people with eating disorders, 8 p.m. Tuesdays, Presbyterian Church on the Green Parish House, Broad St., Bloomfield (7:30 to 9 p.m.); Wednesdays, Christ Church, Park and Bloomfield avenues (opposite Grand Union), Bloomfield (8 p.m.). For more information, call 746-4658; Thursdays, Grace Episcopal Church, 200 Highfield Lane, Nutley (7 p.m.).

Living With Cancer, for cancer patients and their families, 7 to 9 p.m. third Wednesdays, Mountainside Hospital, Montclair, 429-6140 or 429-6128.

Recovery Inc., a community mental health self-help group for persons who suffer from nervous symptoms and fears, 7:30 p.m. Wednesdays, Parks Dept., 44 Park Ave., Nutley. For free literature, call (908) 766-7466.

Make Today Count, a support group for patients and families dealing with cancer and other life-threatening illnesses, 7 p.m. Mondays, Clara Maass Medical Center, Belleville. 450-2230.

UNHOOKED, for drug and alcohol abuse. Call 643-5050 noon to 7 p.m. Monday through Friday for New Jersey treatment and referrals and substance abuse information. Confidential.

POISON INFORMATION, 1-800-962-1253.

SOCIAL SECURITY 24-hour toll free number, 1-800-772-1213. Live operators on duty 7 a.m. to 7 p.m. Monday through Friday. Other times, leave number. Someone will call you back.

Cancer Response System, 1-800-227-2345, 9 a.m. to 5 p.m. Monday through Friday.

TEEN HOTLINE, a nationwide toll free hotline for homeless and troubled teens and families, 1-800-999-9999.

Other events...

Free health screenings, Montclair Community Hospital, 120 Harrison Ave., Montclair. Appointments mandatory. Call 744-7300 ext. 4296, 10 a.m. to 2 p.m. Monday through Friday, Dec. 19; gynecological, Dr. Ehrlich.

CPR and first aid classes, sponsored by Nutley Chapter, American Red Cross, 169 Chestnut St. Pre-registration required. Call AnnMarie at 667-3818 9 a.m. to noon and 1 to 4 p.m.

FLEA MARKET & CRAFT SHOW

Saturday December 19th 9am-5pm
at
NUTLEY HIGH SCHOOL
300 Franklin Ave. Nutley

All Proceeds To Benefit
Project Graduation Class of 1993

Psychic Readings
by
Jennifer
Reader + Advisor

Pyramid Readings/Crystal Readings
Tarot cards \$10 Palm Reading \$5
Advice for All Problems
Call for Free Question

\$7.50
Tea Cup Reading **460-0621** Lyndhurst

Meetings...

Roche Retirees, Jan. 9. Board at 11:30 p.m., assembly at 1 p.m. Call hotline for program info. (235-5200).

Women's Auxiliary Lions Club of Nutley, seeking new members. 7 p.m. first Thursday at Meyer's Bakery, Nutley. For more information, call Betty Lazur at 667-9127 or Louise Beck at 661-2906.

Belleville Kiwanis Club, 6:30 p.m. Thursdays, Branch Brook Manor, Washington Ave., Belleville. For membership information, call Nino Bucciarelli at 751-2110 or Vinnie Sorrentino at 759-6475.

Court Gracia, Court 751, CDA, Nutley Amvets Post 30, 184 Park Ave. Dec. 21: Christmas party.

St. Mary's Youth Group, 8 to 10 p.m. Thursday nights, St. Mary's School gym, Msgr. Owens Place, Nutley. For those in the 8th grade or older.

Tri-County Camera Club, 8 p.m. Tuesdays, Nutley Historical Museum, 65 Church St. For more information, call 761-5591 or 667-3740.

American Legion Auxiliary Nutley Unit 70, 8 p.m., second Monday (except Jan.), Nutley post home, 45 Franklin Ave.

Essex Salon Eight of the Eight and Forty, 8 p.m. third Monday, 45 Franklin Ave., Nutley.

Essex County American Legion auxiliary, 8 p.m. second Thursday (except Jan.), 45 Franklin Ave., Nutley.

White Eagle Unit 448, American Legion Auxiliary, fourth Monday, 41 Broughton Ave., Bloomfield. Dec. 28: Christmas party at 7:45 p.m.

THEN: "The water was everywhere. Then our house fell apart. It was a miracle my son survived. So many died in the storm."

NOW: "We still remember the help CARE brought. Food, clothing, medicine. Even tools to help us rebuild. And my son — he is healthy and growing."



CARE

Right now millions of people in 42 countries are changing their lives with help from CARE. Millions more are waiting for their chance.

MAKE A DIFFERENCE 1-800-521-CARE

Christmas Mission Project

Purchase Your Tree At
Montgomery Presbyterian Church
638 Mill Street, Belleville



Priced Less Than Our Competitors

Call Church Office For Daily Hours 759-7414

Tell Your Neighbors

Rear Parking Area at Little League Field

Woman's Club celebrates its 70th anniversary

Members of the Woman's Club of Belleville celebrated the organization's 70th birthday Nov. 9 at the clubhouse. Over 80 people attended the affair.

The Woman's Club of Belleville was founded in 1916 and joined the N.J. State Federation of Women's Clubs in 1922. The clubhouse on Rossmore Place was purchased in 1928 from the Clearmans, a prominent Belleville family.

Through the past 70 years, thousands of civic minded clubwomen have volunteered their services to the Red Cross, American Cancer Society, Belleville Public Library, Safe House, Geriatrics Center and other worthwhile projects.

The anniversary program included the presentation of a scroll to the club by Louise Bogle, NJFWC Eighth District vice president and the reading of a resolution by Mayor Marina Perna, Deputy Mayor or Mario Drodz and Councilmen Cook and Spillane. It was accepted by President Barbara Spillane.

Past presidents were also honored during the affair. Virginia Streetor and Lorena Clark were presented with gold GFWC membership cards for over 50 years of membership by Mary Lou Sullivan, GFWC membership chairman. Also honored were past presidents Leonora Keeney and Marie Drake.

A musical revue of show tunes was sung by Marie Drake and her daughter, Susan Cutugno.

Other representatives from the NJFWC board of directors were Cathy Southwick, second vice president; Deen Meloro, corresponding secretary; Sally Lowden, third district vice president and Phyllis Schreck, State Evening Membership Department chairman. Also in attendance were eighth district presidents, district chairmen and club members.

The Woman's Club of Belleville meets the second Monday of each month at the clubhouse, 51 Rossmore Place. Interested women are invited to attend the meetings.



Anthony Gingerelli — Jillaine Bruno

Bruno-Gingerelli troth told; wedding in June

Rev. and Mrs. Peter Bruno Sr. of Nutley announce the engagement of their daughter, Jillaine Ann, to Anthony Joseph Gingerelli, son of Mr. and Mrs. Robert Gingerelli of Belleville.

Miss Bruno, an alumna of Nutley High School, is a secretary at Nutley Assembly of God.

Mr. Gingerelli, a graduate of Belleville High School, is with the Belleville Fire Dept.

The troth was made known Nov. 6. The wedding is planned for next June.

Stork Club

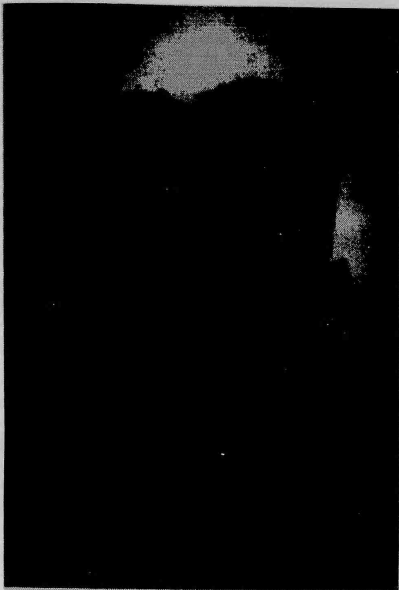
Brian Kenneth Dixon

A first child, a son, Brian Kenneth, was born to Mr. and Mrs. Keith W. Dixon of Kendall Park July 21 at St. Peter's Medical Center, New Brunswick. Birth weight was 2 pounds, 4 ounces. Mrs. Dixon is the former MaryJo De Santis of Belleville. Grandparents are Mr. and Mrs. Anthony De Santis and Mr. and Mrs. William K. Dixon, all of Belleville.

Christian Anthony Grau

A first child, a son, Christian Anthony, was born to Mr. and Mrs. Eric Grau of Belleville Oct. 4 at Palisades General Hospital. Birth weight was 8 pounds, 15 ounces.

Mrs. Grau is the former Ailie Beth Crines, daughter of Mr. and Mrs. William P. Crines Sr. of Nutley. Mr. Grau, son of Mrs. Idila Grau of Weehawken, is self-employed.



Kelli Ann Phelps — Michael De Chiara

Kelli Ann Phelps, Michael De Chiara to wed

Mr. and Mrs. Ralph Phelps of Belleville announce the engagement of their daughter, Kelli Ann, to Michael Thomas De Chiara, son of Mr. and Mrs. Wilson De Chiara, also of Belleville.

Miss Phelps, an alumna of Berkeley College of Business, is a legal secretary with Hack, Piro,

O'Day, Merktinger, Wallace & McKenna, P.A., West Orange.

Mr. De Chiara, a graduate of Stevens Institute of Technology, Hoboken, is a systems consultant with AT&T, Woodbridge.

The troth was made known Oct. 13 in Jamaica.



CELEBRATING THE ANNIVERSARY ARE Phyllis Schreck, Cathy Southwick, Barbara Spillane, Deen Meloro and Mary Lou Sullivan.

Santa talks to kids at Clara Maass

Children of all ages may call Santa at the TEL-MED service of Clara Maass Medical Center and listen to Santa's holiday message.

Santa (tape number 395) greets children with a "ho-ho-ho" and talks about the joy of giving as well

as receiving presents and the importance of keeping safe and healthy during the holiday season.

Children may call TEL-MED at 751-7000 from 9 a.m. to 4:30 p.m. seven days a week, except holidays and ask for the holiday tape by number.

TEL-MED offers health information on a variety of topics throughout the year. For a complimentary listing of TEL-MED tapes, call 1-800-CLARA-MAASS, or send a self-addressed stamped envelope to Clara Maass Medical Center, Public Relations Dept., One Franklin Ave., Belleville 07109.



MADONNA is a small spayed female who has been living on the streets and surviving on handouts. She is one of many loving animals available from People for Animals and would make a great companion for a single person or an adult couple. For adoption information, call 1-908-241-4954.

Working Miracles Every Day

Nearly 900,000 disaster victims — plus emergency workers and others — received assistance from The Salvation Army last year.



Sharing Is Caring

PROFESSIONAL MUSIC STUDIOS
677 Passaic Ave. • Nutley 661-4885

*Our Outstanding Faculty of teachers
All Hold Degrees in Music*

Lessons on all instruments and voice
All styles and levels

- Kramer
- Fernandes
- Heritage
- Martin
- Sony
- JBL
- Stringray

- Yamaha
- Boss
- Fender
- Pearl

Gift Certificates Available For Lessons and Instruments

Bring in this ad for a FREE Drawing on a Guitar or Drum

Financing Available

Pantano's Renaissance
Known for generations for Steaks, Prime Ribs, Seafood

FOR AN ELEGANT CHRISTMAS BUFFET
Chef Carved • Turkey, Prime Ribs, Ham & Lamb
Shrimp • Clams • Viennese Table • Fresh Fruit-OPA OPA Drink
RESERVE EARLY \$19.95 per person

GALA NEW YEAR'S EVE PARTY
Prime Rib Dinner with all the Trimmings
TICKETS \$55.00 Tax & Tip Included

DAILY SPECIALS INCLUDE FROM \$9.95
Shrimp Cocktail
Soup & Salad Bar
OPA-OPA Drink
Children's Menu \$1.95
BUSINESS LUNCHEON SPECIALS \$4.30

WEDDING DREAMS FROM \$33.95
11/2 Hours Open Bar
Floral Decorations
7 Course Dinner
Tuxedo
Wedding Cake
Silver Chandeliers
A Flowers
Flaming Jubilee Show
Private Bridal Room
White Glove Service

Free Birthday or Anniversary Cake with Dinner Reservations
908-322-7726
Park & Mountain Ave., Scotch Plains, NJ
Elegant Bar
Suits/Coats
Early Access From 5:00 PM
Rts. 78 & 287

NEW JERSEY UROLOGY ASSOCIATES, P.A.

LOUIS J. DI BELLA JR., M.D. • IRA D. TANZER, M.D.
DIPLOMATES AMERICAN BOARD OF UROLOGY

We are participating physicians in the Medicare Program and accept assignment for all office visits, consultations, and surgery.

OUR PRACTICE ENCOMPASSES THE FOLLOWING:

- Kidney, Bladder and Prostate Surgery including Laser Prostatectomy
- All Urologic Cancers
- Stone Disease - both Medical and Surgical Treatment Laser Lithotripsy and Shock-wave Lithotripsy at The Stone Center of New Jersey in Newark.
- Infertility
- Treatment of Impotence (with insertion of penile Prosthesis)
- Treatment of Urinary Tract Infection
- Cystoscopy and Vasectomy
- Prostatic Ultrasound

TWO CONVENIENT OFFICE LOCATIONS

180 Franklin Ave.
NUTLEY, NJ
667-5666

17 Sylvan St.
RUTHERFORD, NJ
460-7410

SINUS CARE GROUP

State of The Art Treatment For Nasal and Sinus Disease

DIAL 66-SINUS 667-4687

Bruce E. Gordon M.D. Arthur I. Lester M.D.
562 Kingsland St., Nutley 235-1400
5 Franklin Ave., Belleville 759-4005
39 Seelye Ave., Kearny 997-2347



CHIROPRACTIC FOR BETTER HEALTH

DR. GAETANO BUTTITTA

—CHIROPRACTO—

"SHOOTING PAINS"

If you're a victim of sciatica, you know what "shooting pains" are all about. The sometimes excruciating pain of sciatica frequently affects the hip, thigh and back of the leg. The ankle and foot are sometimes affected, too. But that's not where the problem is.

The sciatic nerve, the largest nerve in the body, extends from the lower spine to the back of the thigh and knee. Then it divides. One nerve goes down the front of the leg, and the other goes down the back of the leg.

It's the inflammation of the sciatic nerve that causes the pain. This can be triggered by

an irritated nerve root. What causes the irritation? The cause may be traced to a misalignment of the spinal column that's putting abnormal pressure on the roots of the sciatic nerves as they pass between the vertebrae.

Through x-rays and other procedures, the doctor of chiropractic can locate the misaligned vertebrae. Using a gentle adjustment, he can align it properly again to help eliminate the cause and the pain.

Buttitta Chiropractic Physicians Group
591 Franklin Ave.
Nutley • 661-1100

BUTTITTA
CHIROPRACTIC PHYSICIANS GROUP

FREE INITIAL CONSULTATION AND EXAMINATION

Includes: Orthopedic, Neurological & Chiropractic
Offer valid for new patients only, with mention of this ad.

EXPIRES 1/21/93

GRAND UNION

HAPPY CHANUKAH



U.S.D.A. Grade 'A' - 10 to 13 Lbs.

Fresh Turkeys

Shank Portion - Water Added

Smoked Ham Fully Cooked Lb.

Your Choice!

79¢

Regular Filter Pack (7 10-oz.), Lite (12-oz.)
Rich French Roast (12-oz.) or Reg/Elec. Perk or ADC

Maxwell House Coffee

13-oz.
Can

169



California - Excellent Source of Vitamin C

Navel Oranges

4-Lb.
Bag

199



Assorted SuperMoist Varieties - Except Angel Food

Betty Crocker Cake Mix

18-oz. to
18.25-oz.
Boxes

79¢

Broccoli Cheese (10.5-oz.), Golden Corn or
Cream of Chicken, Mushroom, Celery or Broccoli

Campbell's Soup

TV
SPECIAL

3 \$2

10.75-oz.
CansCrangrape, Cranapple, Cranberry,
Cranstrawberry or Cranraspberry

Ocean Spray Drink

TV
SPECIAL

2 \$5

Half Gal.
Btl.Regular or Diet Mug Cream Soda or Root Beer, Slice, Schweppes
Ginger Ale, Mt. Dew or Regular or Caffeine-Free Diet Pepsi or

Pepsi or Diet Pepsi

2-Liter
Btl.
Plus Deposit
where req.

99¢

SUPER COUPON

All Purpose or Unbleached (640)
Gold Medal FlourOne
5-Lb.
Bag

59¢

With This Coupon And Purchase of \$5.00 Or More, Good
Dec. 13 Thru Dec. 19. Limit One Coupon Per Family.

GRAND UNION

SUPER COUPON

Lite, Part Skim or Whole Milk Cheese

Sorrento MozzarellaOne
1-Lb.
Pkg.

199

With This Coupon And Purchase of \$5.00 Or More, Good
Dec. 13 Thru Dec. 19. Limit One Coupon Per Family.

GRAND UNION

SUPER COUPON

Regular or Homestyle
Orange Juice Not from Concentrate (641)
Tropicana Pure PremiumOne
Half Gal.
Can

199

With This Coupon And Purchase of \$5.00 Or More, Good
Dec. 13 Thru Dec. 19. Limit One Coupon Per Family.

GRAND UNION

Excludes Sun., Dec. 13, 1992. \$5.00 minimum required to limit sales to 3 pages of any issue. Not responsible for typographical errors.

SPORTS

By Mike Lamberti



Roll certainly looks back on his days as a player with fondness.

Mannion named to NNJIL team

this season," Worley said. "She was injured early in the season, but she came back and played very well."

"It's too bad she didn't come out sooner," Worley said of Sansano.

Another sophomore, **Jennifer Palumbo** played both varsity and JV ball this fall. Palumbo filled in

volunteer assistant coaches Wayne Worley, Joe Oese and Carolyn Giuffrida.

Junior Bucs dominate at Livingston

Cardinale retired after five years coaching the Junior Bucs. Along with **Lou Riccardi**, Cardinale compiled a 43-1 record during that five-

Varsity club dinner was big success

Dam, van Dam, van Dam, van Dam
and finally, Vandam (oops, did I
spell that last one wrong?)

Buccaneer football player John Al
Varsity Club dinner. Listening an
Sawyer (Franklin)

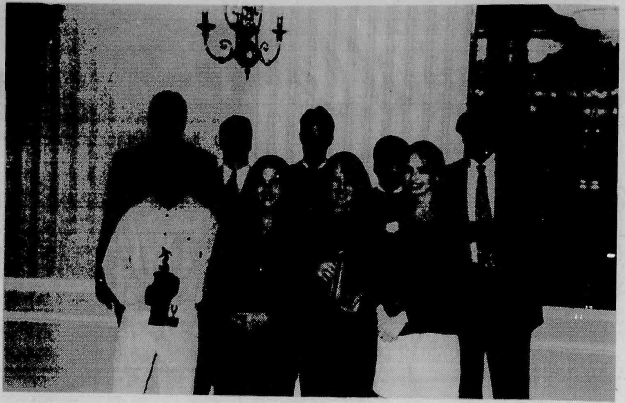
1



Buccaneer football player John Alvarado gives a moving speech to the large crowd at the Chandelier during the Varsity Club dinner. Listening are Ricky Constantino, Mike Citarella, John Engdahl and head coach John Senesky (far left, near flag).



Band director Joe Kraemer (back row, center) and senior members of the very talented Buccaneer band.



The Belleville soccer team had a phenomenal year for coach Gino DePinto (far right) and JV mentor George Tortorello (far left).



Grace Worley (far left) and her volleyball team had a very good year in 1992. The Lady Bucs finished 14-10 and advanced to the state tournament.



Cross country coach John Tosato (second from right) and his runners following ceremonies at Varsity Club dinner last week.

RECREATION ROUNDUP

Gymnastics program

The Belleville Recreation Department will again offer its always popular Gymnastics pro-

gram for girls on Saturdays at the Friendly House. This activity is slated to begin on Dec. 5 and will continue through March. Girls in grades 1-6 will participate from 9:30 a.m. to 11:30 a.m. at the Friendly House on Frederick Street. There is no fee required but girls must be Belleville residents. Interested participants should wear sneakers and sign up for the program with the instructors when they arrive. College and high school gymnasts will provide the supervision and will teach the basic fundamentals and routines.

Santa's Mailboxes

Belleville boys and girls are encouraged to get out their pens, pencils, crayons and start writing their lists to Santa Claus now.

Special mailboxes have been set up from now until Dec. 21 to accommodate the expected heavy mail. One is at Town Hall on Washington Avenue and the other is in front of the Silver Lake Fire

House on Franklin Street.

Children can't miss the mailboxes. They're bright red and clearly marked Santa's Mail so no one has an excuse for not writing early.

By very special arrangements made between Mr. Claus and the Department of Recreation & Cultural Affairs, all letter writers are guaranteed an answer. No stamp is necessary and this special mailbox is for Belleville residents only.

If children are too young to write, they are urged to draw a picture and Santa will get the message. Be sure to have someone print the child's name and address so that Santa can answer the letters.

Men's open basketball

The Men's Open Basketball program will begin on Dec. 5, 1 to 4 p.m. at the Middle School - Girls' Gym. Belleville resident men, over 18, can participate by showing the gym supervisor proof of residency. Non-residents will not be allowed in the gym.

AUTO LOANS!

No Credit?

Bad Credit?

WE FINANCE EVERYONE!

New & Used Cars & Trucks!

260 Available Now!

CALL 1-800
CAR LOAN



First year gymnastics head coach Donna Richardi (center) and her senior athletes Colleen Hutchinson (left) and Isabel Santos.

United Artists
Channel 20

OBC-TV
OUR BEST CHOICE

Suburban Cable
Channel 36

OBC-TV Schedule

THURSDAY 12/17/92

5:30 p.m. - Wrestling Tracks
U.S.A.-Wrestling News
6:00 p.m. - The Theresa Nance
Show-News of Concern to Area
Viewers
6:30 p.m. - The 11th 12 Hour-
A Condensed Version of our Sat.
Night Show
7:00 p.m. - Holy Family Nativity
7:30 p.m. - Fiancee-The Uti-
mate Pre-Nuptial Show: Mary Kay
Cosmetics
8:00 p.m. - Film Flicks & Video
Pics-Reviews of Films & Videos
8:30 p.m. - Middle Eastern TV-
Programming for the Middle East-
Eastern Viewers
10:00 p.m. - The Uncle Floyd
Show-Zany Comedy with Uncle
Floyd
10:30 p.m. - Special
11:00 p.m. - Video Spotlight-
Music Videos & Giveaways
FRIDAY 12/18/92
5:00 p.m. - Astrology Today
(Repeat of Tuesday's Show)
6:00 p.m. - Sudzin Country Vid-

eos-Country Videos w/Host Herb
Sudzin
7:00 p.m. - Film Flicks & Video
Pics
7:30 p.m. - Special
8:00 p.m. - Front Page Edition:
Christian Victory Fellowship-Drug
Awareness Special
8:30 p.m. - Pro Wrestling Today:
Picks & Previews of Pro Wrestling
9:00 p.m. - Scholastic Sports
Today-Interviews with Area
Coaches
9:30 p.m. - Wrestling Tracks
U.S.A.
10:00 p.m. - The Uncle Floyd
Show
10:30 p.m. - Power Play

SATURDAY 12/19/92

10:30 a.m. - Front Page Edition:
Christian Victory Fellowship-Drug
Awareness Special
11:00 a.m. - The Theresa Nance
Show
11:30 a.m. - The Final Score-
Pro Sports Handicapping
12:00 noon - Pro Wrestling Today

12:30 p.m. - America's Backyard-
Home Fix-It & Gardening Tips
10:00 p.m. - The Uncle Floyd
Show
11:00 p.m. - The 11th Hour Live-
Live Comedy
SUNDAY 12/20/92
10:00 a.m. - Fiancees-Mary Kay
Cosmetics
10:30 a.m. - Pro Wrestling Today
11:00 a.m. - The Final Score
11:30 a.m. - Health
Issues-Interviews with Area Health
Professionals: Health Cross
12 noon - Meet Your Mayor:
Garfield
12:30 p.m. - America's Backyard

MONDAY 12/21/92

8:00 p.m. - Front Page Edition:
Bergen County Domestic Violence
8:30 p.m. - Health Issues: Health
Cross
9:00 p.m. - Meet Your Mayor:
Lodi
9:30 p.m. - Film Flicks & Video
Pics
10:00 p.m. - The Uncle Floyd

Show

10:30 p.m. - Power Play-Music
Videos That MTV Doesn't Play
TUESDAY 12/22/92
6:00 p.m. - Sing Along New
Jersey-See Club Goers Sing to their
Favorite Songs
6:30 p.m. - The 11th 12 Hour
7:00 p.m. - Special
9:00 p.m. - Astrology Today
Hosted by Steven Joseph Sinopoli.
This will be live! So call int 2 hour
Christmas special

WEDNESDAY 12/23/92

6:30 p.m. - Christmas: A Time
To Forgive
7:00 p.m. - Fiancees-Pre-Nuptial
Agreements: Mary Kay Cosmetics
7:30 p.m. - Scholastic Sports
Today
8:00 p.m. - Power Play Country
10:00 p.m. - The Uncle Floyd
Show
10:30 p.m. - Sing Along New
Jersey
11:00 p.m. - Meadowlands Show-
case



SILVER LAKE

Business Council

has it all...



Butchers • Bakers • Tailors & Shoe Makers ----Plus

Shop... Silver Lake

the **CROSSING** 751-5364
INN 85 Franklin St.
(Silver Lake)
Belleville, N.J.

PRIME RIB

EVERY SATURDAY5:30-10PM

LUNCH: Served: Mon. thru Fri. from 11:30 am

DINNER: 5:00 to 10:00 pm

SANDWICHES TIL MIDNIGHT

SPECIAL DINNER MENU: Saturday 5:30-10pm

•CLOSED SUNDAYS •

*For All Your Shopping Needs
Visit These Local Merchants*

Season's Greetings

from

Delevan Auto Body

8-10 Delevan Place
Belleville

759-3796

The Name
Says It All

Jim Thornley

EXPRESS GLASS SERVICE, INC.

Commercial • Residential

Custom Mirrors • Store Fronts • Insurance Claims • Aluminum Entrances

150 Belmont Ave.
Belleville

Tel: (201) 759-2828 • Fax: (201) 759-1861

MERRY
CHRISTMAS



Buccino's Italian

Specialties

Hot and Cold Catering

6 FOOT SUBS

IMPORTED SPECIALTIES

ITALIAN DINNERS

MOZZARELLA MADE DAILY

148 Franklin Street
Belleville, N.J. 07109

(201) 759-1737

GRAND
OPENING!

C & M

COMMUNICATIONS & SOUND

72 Belmont Ave., Belleville (near Pathmark)

751-7179

Monday-Friday 10-8; Saturday 9-5; Sunday 11-5

FOR YOUR CONVENIENCE WE DO INSTALLATIONS AT OUR PLACE OR YOURS

• WINDOW TINTING
• CAR PHONES
• STEREO'S INSTALLED
• MAG WHEELS

BEEPERS
as low as
\$6.95

**AUTO
ALARM**
Grand Opening
Special

• Flashing light
• 2 Remote
• Passive Arming
• Shock & Glass
• Remote
• Ignition Kill
• 1 Year Warranty

\$149.00

\$129.99

\$129.99

C&R Automotive Co., Inc.



**COMPUTERIZED
WHEEL ALIGNMENT**

\$24.95

839 N.6th Street (201) 482-6700 near Belleville town

C&R Automotive Co., Inc.



LUBE, OIL & FILTER

\$16.95

839 N.6th Street (201) 482-6700

Obituaries

Ralph DiMaio, 69

Ralph DiMaio, 69, of Belleville, who had owned DiMaio Construction in Belleville for many years, died Dec. 8 in the Clara Maass Medical Center, Belleville.

A Mass was offered Dec. 11 in St. Anthony's Church, Belleville, after the funeral from the Zarro Funeral Home, Bloomfield.

A general contractor, Mr. DiMaio owned DiMaio Construction in Belleville for 45 years before retiring seven years ago.

He served in the Army 76th Engineer Construction B unit. Born in Newark, Mr. DiMaio lived in Bloomfield and Hackettstown before moving to Belleville 43 years ago.

Surviving are his wife, Mildred; a daughter, Mrs. Barbara A. Tripodi; a son, Dr. Ralph J.; five brothers, Andrew, Samuel, Jerry, Alfonso and Vincent; two sisters, Mrs. Angelina Jewell and Mrs. Mary Masker, and three grandchildren.

Antoinette Long, 83

A Mass for Mrs. Antoinette Long, 83, of Belleville was offered Dec. 15 in the Holy Family Church, Nutley, following the funeral from the Megaro Memorial Home, Belleville.

Mrs. Long died Dec. 11 in the Clara Maass Medical Center, Belleville.

Born in Newark, she lived in Belleville for 60 years.

Surviving are a daughter, Mrs. Virginia Peraino; a son, Joseph; a brother, Peter Cinterella; two sisters, Mrs. Mildred Pasquariello and Mrs. Geraldine Cieulo; four grandchildren and two great-grandchildren.

Frances Wojtowicz, 81

Mrs. Frances B. Wojtowicz, 81, of Nutley died Dec. 14 in Mountaintop Hospital, Glen Ridge.

A Mass was offered Dec. 17 in St. Mary's Church, Nutley, after the funeral from the S.W. Brown & Son Funeral Home, Nutley.

Mrs. Wojtowicz had been employed by RCA of Woodbridge and Harrison for 25 years, retiring

18 years ago as an inspector. Born in Wilkes-Barre, Pa., she lived in Belleville before moving to Nutley 26 years ago.

Surviving are six sisters, Mrs. Anna Zawadzki, Mrs. Mary Golden, Miss Stella Wilk, Mrs. Verna Doyle, Mrs. Victoria Fazio and Mrs. Helen Adams, and a brother, Stanley Wilk.

Brenda Cameron, 39

Brenda L. Cameron, 39, of Belleville died on Monday, November 30, at the Clara Maass Medical Center in Belleville.

Born in Belleville, she was a lifelong resident here. She was a Sales Executive with Macy's in Bridgewater for several years, and was a graduate of Rutgers University in Newark with a degree in Botany.

Surviving are two daughters, Malori and Taylor; her parents, Thebert and Alfreda Cameron; her brother, William, and her sister, Merita.

A funeral service was held on Friday, December 4, in the New Calvary Baptist Church in Montclair. Funeral arrangements were by Martin's Home for Service in Montclair.

Jim Carson, 76

Jim Carson, 76, of Bloomfield died on December 9 at Clara Maass Medical Center in Belleville.

Born in Omagh, County Tyrone, Northern Ireland, Mr. Carson came to the United States at the age of 23, settling in Belleville where he resided until moving to Bloomfield 20 years ago.

He was Electrician with the Lexington Electric Company in Newark for many years, until his retirement.

His wife, the former Emelia Davis, predeceased him.

Surviving are his sister, Mrs. Eileen Monamy of Belleville; nieces Mrs. Sandra Every and Mrs. Robert Shabazian, and brothers George Murdy and Charles Carson.

A funeral service was held on December 12 in the Georgian Chapel of the Irvine-Cozzarelli Memorial Home in Belleville, officiated by the Pastor of the Mountaintop Presbyterian Church of Mountaintop.

Interment was in Restland Memorial Park in East Hanover.

Frances Wojtowicz, 81

Mrs. Frances B. Wojtowicz, 81, of Nutley died on Monday, December 14, at Mountaintop Hospital in Glen Ridge.

Born in Wilkes-Barre, Pennsylvania, Mrs. Wojtowicz resided in Belleville before moving to Nutley 26 years ago.

Mrs. Wojtowicz was employed by Radio Corporation of America in Woodbridge, formerly of Harrison, for 25 years, retiring as Inspector 18 years ago.

Surviving are six sisters, Mrs. Anna Zawadzki, Mrs. Mary Golden, Miss Stella Wilk, Mrs. Verna Doyle, Mrs. Victoria Fazio and Mrs. Helen Adams, and one brother, Stanley Wilk.

The funeral Mass was scheduled for today, December 17, at St. Mary's Church in Nutley following the funeral from the S.W. Brown and Son Funeral Home in Nutley. Interment is at Holy Cross Cemetery.

Daniel F. Clark, 69

Daniel F. Clark, 69, of Belleville died on Saturday, December 12, at Passaic General Hospital in Passaic.

Born in Wishaw, Scotland, Mr. Clark came to Belleville 35 years ago from Scotland.

He was Maintenance Mechanic for the Passaic Valley Sewerage Commission in Newark for four years until his retirement seven and one-half years ago. Previously, he

was Machinist for T. Shriver and Company of Harrison for 20 years.

Mr. Clark served in the British Merchant Marine during World War II.

Surviving are his wife, Nan Neil Clark, and his brother, William Clark.

A funeral service was held on Tuesday, December 15, at the Montgomery Presbyterian Church in Belleville.

Joseph J. Dulany

Joseph J. Dulany of Waretown, New Jersey, died on November 17 at Community Medical Hospital in Foms River.

Born in Kearny, Mr. Dulany lived in Belleville for 39 years before moving to Waretown three years ago.

He was a Plater for Wallace and Tiernan Corporation in Belleville for 32 years until his retirement in 1987.

Mr. Dulany was a member of the American Jubilee Club of Wallace and Tiernan in Belleville.

Surviving are his wife, the former Romayne (June) Harris; his brother, William T. of Whiting, New Jersey; his sister, Marie Hawley of Forked River, New Jersey; several aunts and uncles; many nieces and nephews, and his mother-in-law, Florence Harris.

His sister, Mrs. Virginia Hamlin, and his father and mother, predeceased him.

Interment was in Pennsylvania.

Take Notice that application has been made to the Board of Commissioners of the Township of Belleville, New Jersey, to transfer to GEEPR, INC. trading as FAMILY CONVENIENCE & LIQUORS for premises located at 542 Washington Avenue, Belleville, N.J. the Present Retail Distribution No. 0701-4002-003 heretofore issued to ALSALT FOOD & LIQUOR, INC. trading as WAREHOUSE LIQUORS for premises located at 542 Washington Avenue, Belleville, N.J. KAMAL K. RASTOGI, 114 Spruce St., So. Plainfield, NJ 07080. Geeta Datta, 29 Annadale Road, Staten Island, N.Y. 10312.

Objections, if any, should be made immediately in writing to Mary Lou Hood, Township Clerk, Town Hall, Belleville, N.J. KAMAL RASTOGI 542 Washington Avenue, Belleville, NJ 07089

Belleville Times Dec. 17, 1992 Fee \$23.50

TOWNSHIP OF BELLEVILLE ZONING BOARD OF ADJUSTMENT NOTICE

TO WHOM IT MAY CONCERN: In compliance with Chapter 291, Laws of N.J. 1975 (N.J.S.A. 40:55D-1 et seq.) and the Zoning Ordinance of the Township of Belleville, notice is hereby served upon you to the effect that we, Mr. and Mrs. Olivo do hereby propose to construct a 1 1/2 story, one Family Residence to new two Family Residence. Location: 731 Eastside Avenue, Belleville, N.J. Block 585, Lot 4.

In view of the fact that the erection, alteration, conversion or use of said premises is not in conformity with the Zoning Ordinance of the Township of Belleville, any person or persons interested by said appeal will be given an opportunity to be heard at the meeting to be held on Jan. 5, 1993 at 7:30 p.m. in the Belleville Township Municipal Building at 152 Washington Avenue, Belleville, New Jersey. Copies of all documents related to this application are available for public inspection at the office of Planning and Development, 383 Washington Avenue, Belleville, N.J. during regular business hours (8:30 a.m. - 4:00 p.m.). Mr. and Mrs. Olivo Applicant

Belleville Times Dec. 17, 1992 Fee: \$15.08 No. B92-567

TOWNSHIP ORDINANCE PUBLIC NOTICE

It is hereby given that the following proposed ordinance was introduced and passed on first reading at a meeting of the Municipal Council of the Township of Belleville, N.J. held on Tuesday evening, December 8, 1992, and further notice is hereby given that the second and final reading of said ordinance will be considered by said Municipal Council at a meeting to be held at the Town Hall, Washington Avenue and Belmont Avenue, Tuesday evening, January 12, 1993 at 8 o'clock p.m. when all objections to the passing of same will be heard and considered.

Mary Lou Hood, Municipal Clerk AN ORDINANCE TO AMEND A BOND ORDINANCE PROVIDING FOR THE REPAIR AND MAINTENANCE OF MUNICIPAL STADIUM IN AND BY THE TOWNSHIP OF BELLEVILLE, IN THE COUNTY OF ESSEX, NEW JERSEY, APPROPRIATING EXISTING BOND PROCEEDS, INCLUDING \$79,291.59 EXPECTED TO BE RECEIVED FROM THE N.J. DEPT. OF ENVIRONMENTAL PROTECTION AND AUTHORIZING THE ISSUANCE OF \$95,000.00 IN BONDS OR NOTES OF THE TOWNSHIP FOR FINANCING PART OF THE COST THEREOF.

ATTESTED BY THE MUNICIPAL CLERK OF THE TOWNSHIP OF BELLEVILLE, NEW JERSEY.

Section 1. The improvement described in Section 3 of this bond ordinance has heretofore been and is hereby authorized as a general improvement to be made or acquired by the Township of Belleville, New Jersey. For the said improvement or purpose stated in Section 3 there is hereby appropriated the sum of \$100,000.00, said sum being inclusive of all appropriations heretofore made therefor and including the sum of \$5,000.00 the down payment for said improvement or purpose required by law and now available thereto by virtue of provisions in a previously adopted budget or budgets of the Township for down payment or for capital improvement purposes.

Section 2. For the financing of said improvement or purpose and to meet the part of said \$100,000.00 appropriation not provided for by application heretofore made, there is hereby authorized the Township to be issued in the principal amount of \$95,000.00 pursuant to the Local Bond Law of New Jersey. In anticipation of the issuance of said bonds and to temporarily finance said improvement or purpose, negotiable notes of the Township in a principal amount not exceeding \$95,000.00 are hereby authorized to be issued pursuant to and within the limitations prescribed by said law.

Section 3. (a) The improvement hereby authorized and the purpose for which the bonds are to be issued is the improvement of the existing municipal stadium including the rehabilitation of the concrete structure, barrier free access to bathrooms, drainage

improvements, additional parking facilities on Nelson Street, landscaping and walkways to the field. Such improvements also include all preliminary planning, engineering and design expenses and all work and materials necessary therefor to be installed thereon, all as shown on and in accordance with the plans and specifications therefor on file in the office of the Township Clerk.

(b) The estimated amount of bonds or notes to be issued for the improvement or purpose is the sum of \$95,000.00.

(c) The purpose of the bonds or notes authorized is to finance commitments that may be incurred from the date of adoption of this bond ordinance.

Section 4. All bond anticipation notes issued hereunder shall mature at such times and in such amounts as may be determined by the Chief Financial Officer; provided that no note shall mature later than one year from its date. The notes shall bear interest at such rate or rates and in such form as may be determined by the Chief Financial Officer. The Chief Financial Officer shall determine all matters in connection with notes issued pursuant to this ordinance, and the chief financial officer's signature upon the notes shall be conclusive evidence as to all such determinations. All notes issued hereunder may be renewed from time to time subject to the provisions of N.J.S.A. 40A:24(a).

The Chief Financial Officer is hereby authorized to sell part of all of the notes from time to time at public or private sale and to deliver to the purchasers thereof a receipt of payment of the purchase price, plus accrued interest from their dates to the date of delivery thereof. The Chief Financial Officer may report in writing to the governing body at the meeting next succeeding the date when any sale or delivery of the notes pursuant to this ordinance is made. Such report must include the amount, the description, the interest rate and the maturity schedule of the notes sold, the price obtained and the name of the purchaser.

Section 5. The following additional matters are hereby determined, declared, recited and stated:

(a) The said purpose described in Section 3 of this bond ordinance is not a current expense in a property or improvement which the Township may lawfully acquire or make as a general improvement, and no part of the cost thereof has been or shall be specially assessed on property or specially benefited thereby.

(b) The period of usefulness of said purpose within the limitations of said Local Bond Law, according to the reasonable life thereof computed from the date of the said bonds authorized by this bond ordinance, is 20 years.

(c) The supplemental debt statement required by said Law has been duly made and filed in the office of the Township Clerk, and a complete executed duplicate thereof has been filed in the office of the Director of the Division of Local Government Services of the Department of Community Affairs of the State of New Jersey, and such statement shows that the gross debt of the Township as defined in said Law is increased by the authorization of the bonds and notes provided for in this bond ordinance, and said obligations authorized by this bond ordinance will be within all debt limitations prescribed by said Law.

(d) An aggregate amount not exceeding \$100,000 for the financing of said improvement, costs of issuing said obligations, engineering costs and other items of expense listed in and permitted under Section 40A:2-2 of said Law may be included as part of the cost of said improvement and is included in the foregoing estimate thereof.

(e) The full faith and credit of the Township are hereby pledged to the punctual payment of the principal of and interest on the said obligations authorized by this bond ordinance. Said obligations shall be bonded, unlimited obligations of the Township, and the Township shall be obligated to levy ad valorem taxes upon all the taxable real property within the Township for the payment of said obligations and interest without limitation of rate or amount.

Section 7. Funds, in the sum of \$229,291.59 expected to be received by the Township for the total project from the New Jersey Department of Environmental Protection is available from the Green Acres and Recreation Opportunities Bonds Acts of 1971, 1974, 1978, 1983 and 1987. Financing under this program known as the Green Acres Trust Local Assistance Program Project Number 0701-88-070, amends the Original Agreement and substitutes the amounts as follows:

Cash Directly from Local Unit - \$23,377.50
Donation Through Local Unit - \$40.00
Local Share - \$21,337.50
State Loan - \$179,968.69
State Grant - \$87,332.90
State Share - \$229,291.59
Total Cost for Approved Project - \$250,629.34

Grant funds received therefrom shall be applied either to direct payment of the cost of the improvement or to payment of the obligations issued pursuant to this Ordinance. The amount of obligations authorized but not issued hereunder shall be reduced to the extent that such funds are received.

Section 8. The temporary capital budget of the Township is hereby amended to conform with the provisions of this ordinance to the extent of any inconsistencies herewith.

Section 9. This bond ordinance shall take effect twenty (20) days after the first publication thereof after final adoption, as provided by said Local Bond Law. Belleville Times Dec. 17, 1992 Fee: \$97.76 No. B92-562

EXERCISE Does Your Heart Good. American Heart Association

PROFESSIONALLY SPEAKING
The Nutley Sun
Belleville Times
Bloomfield Life

<p>Obstetrics/Gynecology</p> <p>Gerard Cicalese, M.D., P.A. Joseph Parlavecchio, M.D.</p> <p>Announces The Grand Opening Of Their Second Office</p> <p>Located at: 382 W. Passaic Ave., Bloomfield, NJ Evening Hours By Appointment Only 330 Washington Ave., Belleville • 751-4300</p>	<p>C.P.A.</p> <p>1992 is nearing an end. NOW is the time to take advantage of our tax planning services for Individuals & Businesses.</p> <p>Avoid possible tax problems in April.</p> <p>Paul Goldman, C.P.A.</p> <p>180 Washington Ave. Belleville • 759-7791 (above "Flowerama")</p>	<p>Chiropractors</p> <p>DR. RALPH J. DI MAIO</p> <p>CHIROPRACTOR</p> <p>Serving your community for over 13 years</p> <p>Most insurances provide coverage</p> <p>751-8805 625 Joramelon St. Belleville</p>
<p>Obstetrics/Gynecology</p> <p>NUTLEY - KEARNY OBSTETRICS - GYNECOLOGY</p> <p>HOWARD GRODER, M.D. JEFFREY ROSEN, M.D.</p> <p>HIGH RISK PREGNANCY INFERTILITY</p> <p>Nutley Medical Plaza 181 Franklin Avenue Nutley, N.J. 07110 667-2212</p> <p>Arlington Medical Building 837 Kearny Avenue Kearny, N.J. 07032 991-1519</p> <p>"Serving The Community For 40 Years"</p>	<p>Dentists</p> <p>Dial "NO-PAINO" (667-2466)</p> <p>Smile Today J.D. Muglia D.D.S., P.A., F.I.S.D.</p> <p>10 Franklin Ave. Nutley, N.J.</p>	<p>Cosmetic & Restorative Dentistry</p> <p>54 Hr. Emergency Service</p>

Pharmacy Footnotes

Vincent Cozzarelli Reg. Ph.

GETTING A READING

It seems to be a universally accepted fact that the body's normal temperature is 98.6 degrees F., or 37.0 degrees Celsius. However, an individual's normal body temperature is not a single value. Body temperature fluctuates according to such factors as the time of day and a person's age. Some people never reach an orally-taken temperature reading of 98.6 degrees F., and most other healthy individuals fall below that value at least once a day. For an accurate rectal thermometer reading, subtract 1 degree F. from the temperature indicated on the thermometer. The normal numbers for adults to remember is that a temperature of 101 degrees F. (with no other symptoms) that lasts for more than three days should be cause to call a physician. When your physician gives you a prescription to treat your symptoms, you can be assured of prompt service when you bring it to us at ROSSMOORE PHARMACY, 318 Washington Ave., 759-1956, 759-1968. We can handle all your needs. For holiday gifts we offer complete selection of tampons, talcum, Timex watches, cosmetics, toiletries and greeting cards. Open: Daily 9am-10pm, Sundays 9am-5pm.

HINT: The determination of 98.6 degrees F. as normal body temperature was made some 150 years ago by a group of researchers.

276 Washington Ave. Belleville 759-1114

TO ADVERTISE YOUR BUSINESS HERE CALL 667-2700

Especially for kids and their families

The Mini Page

© 1992 by Universal Press Syndicate

By BETTY DEBNAM



"A Visit from St. Nicholas" is better known as "The Night Before Christmas." It was written by Dr. Clement Moore of New York City as a present to his children on Christmas Eve in 1822.



'Twas the night before Christmas, when all through the house Not a creature was stirring, not even a mouse; The stockings were hung by the chimney with care, In hopes that St. Nicholas soon would be there.



The children were nestled all snug in their beds, While visions of sugarplums danced in their heads; And Mamma in her kerchief and I in my cap, Had just settled our brains for a long winter's nap — When out on the lawn there rose such a clatter, I sprang from my bed to see what was the matter:



Away to the window I flew like a flash, Tore open the shutters and threw up the sash. The moon, on the breast of the new-fallen snow, Gave a luster of midday to objects below: When, with all my wondering eyes should appear, But a miniature sleigh, and eight tiny reindeer:



With a little old driver, so lively and quick, I knew in a moment it must be St. Nick. More rapid than eagles his coursers they came, And he whistled, and shouted, and called them by name — "Now, Dasher! now, Dancer! now, Prancer and Vixen! On! Comet, on! Cupid, on! Donder and Blitzen;



"To the top of the porch, to the top of the wall, "Now, dash away, dash away, dash away all!" As dry leaves that before the wild hurricane fly, When they meet with an obstacle, mount to the sky, So, up to the housetop the coursers they flew, With a sleigh full of toys — and St. Nicholas too.

Meet Clement Moore, author of our favorite Christmas poem

What a treat! A poem written especially for you by your dad!

You can imagine how pleased the Moore children were when their father read "A Visit From St. Nicholas" to them on Christmas Eve back in 1822.

Dr. Clement Moore knew what kids liked. He had nine of them!

After Dr. Moore read the poem, a relative copied it and took it to a newspaper editor in Troy, N.Y. The paper printed it in December 1823, but did not give the name of the author.

It was not until 15 years after it was first written, in 1837, that it was printed giving Moore's name as the author. The poem was in a book with other poems by him.

Dr. Moore was born in 1779 in New York City. He became a language teacher at a college for men studying to become Episcopal ministers. He died in 1863.

Kids of long ago knew a lot about Santa before Dr. Clement Moore wrote his famous poem.

They knew he dressed in fur and arrived through the chimney. But how did he travel?

Dr. Moore was the first to fill in the details about the sleigh and eight tiny reindeer.



The Mini Page Presidents Poster — with newly elected President Bill Clinton — is available now!

Begin the new year up-to-date with the new Presidents of the United States Poster. Illustrated with reproductions of engraved portraits, this 28" x 22" inch poster shows each of the presidents in chronological order, with the dates that each held office.

An attractive, educational reference, the Presidents Poster is ideal for home and classroom use.

Mail order to:
The Mini Page Presidents Poster
P.O. Box 419150
Kansas City, Mo. 64141

Please send _____ copies of the Presidents of the United States Poster at \$3.00 plus 50¢ each postage and handling. (Make check or money order payable to Andrews and McMeel.) Total amount enclosed _____

Name _____
Address _____
City _____ State _____ Zip _____



Rookie Cookie's Recipe Microwave Christmas Fudge

You'll need:

- ½ cup evaporated milk
- 1 ½ cups sugar
- 2 tablespoons butter or margarine
- 2 cups miniature marshmallows
- 1 ½ cup nuts, chopped
- 1 ½ cups semi-sweet chocolate chips
- 1 teaspoon vanilla

What to do:

1. Place evaporated milk, sugar and butter or margarine in a large, microwave-safe bowl. Mix well. Microwave on HIGH for 3 minutes. Stir every minute.
2. Stir in remaining ingredients until marshmallows and chips are melted.
3. Pour mixture into a greased 8-by-8-inch baking dish. Refrigerate. Cut into squares. Makes 16 squares.



And then in a twinkling I heard on the roof, The prancing and pawing of each little hoof: As I drew in my head, and was turning around, Down the chimney St. Nicholas came with a bound.



He was dressed all in fur, from his head to his foot, And his clothes were all tarnished with ashes and soot: A bundle of toys he had flung on his back, And he looked like a peddler just opening his pack; His eyes how they twinkled! His dimples how merry — His cheeks were like roses, his nose like a cherry;



His droll little mouth was drawn up like a bow, And the beard on his chin was as white as the snow. The stump of a pipe he held tight in his teeth, And the smoke, it encircled his head like a wreath. He had a broad face and a little round belly That shook when he laughed, like a bowl full of jelly.

BASSET BROWN THE NEWS HOUND'S

CHRISTMAS TRY 'N FIND

Words about Christmas are hidden in the block below. Some words are hidden backward or diagonally. See if you can find: CHRISTMAS, DECORATE, CANDLES, TRIMMINGS, SANTA CLAUS, TREE, WREATH, ANGEL, GIFTS, SNOW, GIVE, SONGS, TINSEL, FAMILY, SLEIGH, MANGER.

TIS THE SEASON TO BE JOLLY!

TRIMMINGS IOXLI M
DTREESUALCATNAS
BECHRISTMASJOGT
WCCSKYLIMAFRYI
DRZONLSSGNOJSVN
EMEUCROEGNAMES
FNVAEAWKHGELSE
GPQFTLLTHPLEGNAL
GIFTSHSELDNAC



He was chubby and plump — a right jolly old elf, And I laughed when I saw him in spite of myself. A wink of his eye, and a twist of his head, Soon gave me to know I had nothing to dread. He spoke not a word, but went straight to his work, And filled all the stockings; then turned with a jerk,



And laying his finger aside of his nose, And giving a nod, up the chimney he rose. He sprang to his sleigh, to his team gave a whistle, And away they all flew like the down of a thistle: But I heard him exclaim ere he drove out of sight, "MERRY CHRISTMAS TO ALL, AND TO ALL A GOOD NIGHT!"



This art is based on a Christmas booklet first published in 1846. Thomas Nast, a famous political cartoonist, is thought to have been the artist.

Mini Spy . . .

Mini Spy and her friends are visiting Santa Claus. See if you can find:

ear of corn
reindeer head
kite
tooth
word MINI
caterpillar
sailboat
letter B
butterfly
book
puppy
letter F

flashlight • fish • bell • sock

Fun activities for you and your family

• Draw lines connecting the rhyming words.
• Act out the poem as someone reads it.
• Make up a poem about Christmas Eve at your house.
• Ask a partner to call out one of the rhyming words. See if you can think of the word it matches.

What was "in" for the kids of 1992? Read next week's Mini Page and find out!

How to draw a Santa

Look through the headlines in your local paper. Can you find any words that you know a rhyming word for? Cut and paste several of these words on a sheet of paper. With a partner, see how many rhyming words you can list for each word.

HOLIDAY Savings

BUNK BEDS

Complete with mattresses \$159.00
WHOLESALE OVERSTOCKED
 MATTRESSES: TWINS \$39.00
 FULL-\$49.00 QUEEN \$59.00
CALL:
340-8479 OR 484-9001

East Nutley
Garage & Body Shop, Inc.
 Established 1925

C.C. FANELLI & SONS

24 HR. TOWING N.J. State Lic. #00173A
 PHONE 667-0608 38 Washington Avenue
 FAX # 667-9223 Nutley, New Jersey
 07110

HAVE YOUR CHILD'S NEXT PARTY AT THE PARTY'S HERE

104 Harrison St. • Bloomfield
680-0037

Many Different Themes To Choose From
 (Carnival, Dance, Craft, Beauty & The Beast, Mermaid, etc.)

CHARMING LADY BEAUTY SALON

144 Chestnut Street • Nutley
 Complete Hair Care and Coloring
 Specializing In Perms and Cuts
 To Suit Your Special Look

Gift Certificates Available

667-2133 Appt. Only Laura Laino

Over the Rainbow

6 Bloomfield Ave.
 Bloomfield • 429-9898
"SANTA WILL BE HERE"
 Sat. & Sun. Dec. 19&20
 12 Noon to 6pm
FREE picture with every purchase
 of \$20.00 or more

SLIPPED DISK ENTERTAINMENT

The Finest in D.J. Entertainment

Playing Music From the 40's to Present
 2 Person Teams at Most Parties

Parties starting at: \$300.00
 (includes lights)

1-800-287-0612 or 284-0626
 Commode Parties from 40-4,000

Christmas at HAUCK'S
 Glen Ridge Garden Center
 622 Thomas Blvd.
 Glen Ridge, NJ
 (End of Ridgewood Avenue)
 201-673-4006
 All your Christmas Needs
 Trees
 Grave Covers
 Poinsettias
 Trimmings
 New Jersey's Finest Custom made Wreaths
"Quality For Less"

"Sincerely Yours"
 Wishes To All
A HAPPY
HOLIDAY SEASON!

FEATURING
QUALITY MADE
FRUIT BASKETS (DELIVERED ANYWHERE)

IMPORTED
 GIFTS • CANDIES • NUTS • CHEESES • COOKIES
 Many Decorative Gift Pieces To Choose From
 397 Centre St., Nutley, NJ
 (at Nutley's Center) **OR CALL 235-0345**

HOI'DAY GREETINGS FROM
RICHARDS THE FLORIST
 464 FRANKLIN AVENUE
 NUTLEY
 667-0011
 TONY RULLIS, Prop.

THE ULTIMATE IN FRUIT AND SEASONAL DESIGNS
 FTD, TELEFLORA and AFS
 Delightful Stocking Stuffers
 Place Your Christmas Orders Early!

Smart SANTA SPECIALS
 YOU CAN COUNT ON US FOR FRIENDLY SERVICE AND LOW LOW PRICES
up to 50% OFF
 Regular Price on 14K Gold and Diamond Jewelry
FREE
 SPORTS WATCH
 With Any \$25.00 Purchase!
GOLD MINE TRADING
 726 WASHINGTON AVE., BELLEVILLE
 450-0503 MON., TUES., THURS., FRI. 10-7
 WED. & SAT. 10-6 OPEN SUN. 11 AM-5 PM TILL CHRISTMAS

WINDHEIM PLUMBING & HEATING
 418 Franklin Ave., Nutley
667-6886

- Gas Heat
- Hot Water Heaters
- Disposals
- Dishwashers
- Modernizing Bathrooms & Kitchens

Lic.#143
 We Accept: • Mastercard • Visa • Diner's Club • Carte Blanche •

Season's Greetings
 from the expert hair family

CIRO FOR HAIR

presents
ITS' 1st CUSTOMIZED HOLIDAY GIFTS/BASKETS
 Uniquely creative for chemically treated hair (hair color), perm, relaxed, thin & thinning hair, Dry scalp, oily scalp, or flakes.
Receive a complimentary scalp & hair analysis
 Call For Details
667-6252
 Open Late 2 Evenings:
 Wednesday & Thursday
 expires 12/31/92
 Visa/Mastercard Accepted
 Intercoiffure Salon

VINIE'S PIZZERIA

227 Centre Street • Nutley
FREE DELIVERY 667-1551
 Let Us Cater Your Next Party
 Pizza • Hot Sandwiches • Calzones • Salads • 3' & 6' Subs

THE PERFECT GIFT

For every occasion. For every holiday. Give the gift that makes a difference. A Hair's Our Place Gift Certificate. Right for family or friends. A gift of beauty from our Matrix Essentials salon.

Matrix
 ESSENTIALS



Hair's Our Place

17 James Street, Bloomfield, N.J.
743-7488

Santa is Coming!

Come See Santa in Person & His Elves at the Auriemma Christmas Display

Sunday, December 20, 7-9 PM
 Rain Date: December 21

90 Mt. Prospect Avenue
BELLEVILLE



3 GUYS FROM ITALY RISTORANTE

170 WASHINGTON AVENUE
 BELLEVILLE (near Town Hall) 751-2241



Reserve For Traditional Christmas Eve Dinner

WE PREPARE CHRISTMAS EVE FISH PLATTERS TO GO
 CALL NOW TO ORDER!
 FACILITIES AVAILABLE FOR SMALL PARTIES

CELEBRATE!

MAKE YOUR NEW YEAR'S EVE RESERVATIONS OPEN NEW YEARS DAY

OPEN MONDAY FROM 4 PM
 TUES. - FRI 11-11
 SAT 2 - 12/SUN 12 - 10



THERE'S NO PLACE LIKE HOME

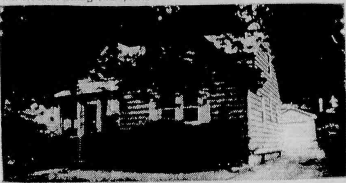
180 Centre St.
Nutley, N.J. 07110
667-3440

GEORGE E. MACMUNN CO.
REALTORS

100 Woodport Road
Sparta, N.J. 07871
729-8727



NUTLEY—Bright, cheerful colonial only 1 block to NY bus, 3 BR's, Lg. eat-in kit., 19x12 LR, formal DR, Nice Fam. RM. Newer gas heat & vinyl windows. Small Rm. off kit. Asking \$164,900.



BLOOMFIELD—Asking \$145,900. Interior just painted & floors redone. Perfect for 1st time home buyer. Fpnl in LR, formal DR, 1 1/2 baths, Fam. Rm., nice BR's, det. gar. Immed. possession.

**DO YOU KNOW
WHAT YOUR
HOUSE IS
WORTH
TODAY?**

We offer a current market
value analysis...
Just pick up the phone & call.



LAKE MOHAWK-SPARTA—Completely redone 6 year ago. Cath LR w/fpnl, huge kit /DR combo w/vaulted ceilings & skylights, 3 BR's, 2 full mod baths, 173 deep lot. Fam. Rm., C/A. Asking \$169,900.



LAKE MOHAWK—Asking \$124,900. Just Listed best buy in town! LR w/stone fpnl, formal DR, Eat-in kit, rear deck, covered side porch, 1/2 blk to beach, nice views, 2 big BR's (both 19x12), new furnace, roof & elec & taxes only \$2,204. Hurry on this!

Keeping The Cold Out New Window Technology

Windows were first invented by the Egyptians. They placed holes in the top of their walls, near the ceiling, to allow for ventilation.

The Romans moved the windows, framed in wood, down to the middle of the wall and sealed them with glass. Steel was introduced as a window framing material in the 1900's.

Aluminum, as a window framing material, was the next material innovation. It entered the marketplace after World War II.

Aluminum is an excellent conduc-

tor. That's one of the reasons it is used so extensively in pots and pans. Thus, the problem was to discover a way to keep the aluminum frame from conducting the outside cold temperature to the inside warm temperature.

The aluminum window frame members are hollow. They are designed that way for maximum strength. In the case of thermal barriers, the metal frame exposed to the outside cold air is separated from the metal frame inside the house. This is done by using either high or low den-

sity polyurethane or rigid vinyl (PVC). Thus, the cold passing through the metal encounters a barrier and is stopped from entering the inside of the house.

Modern aluminum window frames are composed of three pieces: an outer extruded frame, a central core of insulating material, and an inner extruded frame. They work well in addressing the early problem associated with aluminum windows.

Aluminum replacement windows are strong, durable, energy efficient windows that won't swell, shrink, split, crack, check, rust, are ideal for refinishing, and not affected by the sun.

For more information, write to the Aluminum Extruders Council, 1000 N. Rand Road, #214, Wauconda, IL 60084.

**ADVERTISE
IN
Your Hometown Newspapers**

The Nutley Sun
Belleville Times
Bloomfield Life
CALL 667-2100

OUR BEST HOME VALUES

52 EDGAR PLACE
Immaculate 6 1/2 room Colonial with finished rooms in basement. Close to school, shopping & buses. Asking \$174,500

10 DE VAUSNEY PLACE
5 rooms & bath on 1st. 3 rooms & bath on 2nd. Possible mother/daughter. Asking \$169,000

DO YOU KNOW THE MARKET VALUE OF YOUR HOME?
CALL US FOR OUR OPINION WITHOUT COST OR OBLIGATION TO LIST OR SELL.

EVERYONE KNOWS

GEORGE T. BOWES
YOUR NUTLEY REALTOR SINCE 1933
681 FRANKLIN AVE. NUTLEY 667-3376

Happy Holidays
from
**CHARLES
JEWELERS**

163 Washington Ave.
BELLEVILLE
(across from Town Hall)

759-2468

**RECORDS
REALTY**

3 HIGH ST.
NUTLEY

667-5500



**FOR EACH TOWN
Nutley
Belleville
Bloomfield
WIN**

DINNER FOR TWO
For The Nutley Winner
THE GONDOLA
RISTORANTE

For The Bloomfield Winner
WILLIE'S DINNER

For The Belleville Winner
AT THE CROSSING INN
Gratuities & Tax Extra

**\$50.00 VALUE
CASH PRIZE
\$50.00**

FROM ORECHIO PUBLICATIONS
Judges Decision is Final

Christmas Decorating CONTEST

RULES:

Take a picture of your outside
Decorations and send the picture to:

ORECHIO PUBLICATIONS
800 BLOOMFIELD AVE.
NUTLEY, NJ 07110

ALL PICTURES MUST BE RECEIVED
BY MONDAY (DEC. 21ST).

THE WINNER WILL BE ANNOUNCED
IN OUR DECEMBER 23RD EDITION.

Note: For best picture quality we recommend 400 or faster ASA film, when taking your picture at night.



**CHARLES
AURIEMMA**
OF
**AURIEMMA
ELECTRIC**

90 MT.
PROSPECT AVE.
BELLEVILLE

**PETRELLA
PAVING**

ASPHALT PAVING

35 PARK AVE.
NUTLEY

661-9393

TAX SALE

NOTICE OF SALE OF PROPERTY FOR NON-PAYMENT OF TAXES, ASSESSMENTS AND OTHER MUNICIPAL LIENS.

PUBLIC NOTICE IS HEREBY GIVEN that the undersigned, Collector of Taxes of the Township of Belleville, in the County of Essex, will sell at Public Auction in the Council Chambers in the Town Hall of said Township of

MONDAY, DECEMBER 21, 1992

at 11:00 A.M. the following described land:

Said lands will be sold to make the amount of municipal liens chargeable against the same on the first day of July, 1992, as computed in the following list together with interest on said amount from the first day of July to the date of sale and costs of sale.

Said lands will be sold in fee to such persons as will purchase the same subject to redemption at the lowest rate of interest, but in no case in excess of eighteen per centum annum. The payment for the sale shall be made before the conclusion of the sale or the property shall be resold.

Any parcel of real property for which there shall be no other purchase will be struck off and sold to the Township of Belleville in fee for redemption at eighteen per centum, and the municipality shall have the same remedies and rights as other purchasers, including the right to buy or foreclose the right to redemption.

The sale is made under the provision of an act of the legislature entitled, "An act concerning unpaid taxes, assessments and other municipal charges on real property and providing for the collection thereof by the creation and enforcement of liens thereon." (R.S. 54:5-10 to 54:5-11)

At any time before the sale the undersigned will receive payment of the amount due on any property, with the interest and costs incurred up to the time of payment.

The said lands so subject to sale are described in accordance with the tax duplicate, including the name of the owner as shown on the last tax duplicate and the aggregate of taxes and assessments which were in lien thereon the first day of July, 1992, exclusive, however, of the lien for taxes for the year 1991 are listed below:

Given under my hand this nineteenth day of November, 1992.

STEPHEN N. VOGEL, JR.
TAX COLLECTOR

Block	Lot	Qualif.	Name of Owner Property Location	Total Amount
13	17		Roma Realty, Inc. 159 Main St. Roma Realty, Inc. 155 Main St.	\$ 738.45 632.05
13	19		Arrows, Elizabeth, Estate of 114 Cortlandt St.	1,157.92
15	30		Sweeney, Miah, J. 30 William St.	280.96
21	12		Ritter, Mary D. & Leyble, Agnes R. 26 Ralph St.	3,513.24
21	38		Saleritano, G. D. & Lu. Lin-Yun & C. 261-263 Main St.	5,837.90
22	21		Watt, James, Estate of 156 Stephens St.	2,209.77
38	3		Exotic Leather Trading Corp. 14 Raymond St.	546.93
38	4		Exotic Leather Trading Corp. 16 Raymond St.	557.57
38	5		Exotic Leather Trading Corp. 18 Raymond St.	557.57
38	6		Exotic Leather Trading Corp. 20 Raymond St.	568.21
38	7		Exotic Leather Trading Corp. 22 Raymond St.	568.21
38	8		Exotic Leather Trading Corp. 24 Raymond St.	568.21
38	9		Exotic Leather Trading Corp. 26 Raymond St.	578.86
38	21		Exotic Leather Trading Corp. 503-505 Main St.	9,536.54
38	23		Exotic Leather Trading Corp. 491-501 Main St.	10,959.08
39	1		S. Remondino Corp. c/o V. Scirica 26 Ralph St.	10,445.50
47	12		Reverie Realty Inc. 32-34 Greylock Ave.	1,410.69
47	16		Reverie Realty Inc. 42 Greylock Ave.	1,399.85
47	18		Reverie Realty Inc. 44 Greylock Ave.	642.69
47	19		Reverie Realty Inc. 46 Greylock Ave.	2,061.22
47	23		Reverie Realty Inc. 50 Greylock Ave.	1,345.58
47	35		Reverie Realty Inc. 54 Greylock Ave.	34,012.40
47	37		Reverie Realty Inc. 33-49 Roosevelt Ave.	706.52
47	40		Reverie Realty Inc. 27 Roosevelt Ave.	1,798.17
48	11		Reverie Realty Inc. 21-25 Roosevelt Ave.	9,983.32
48	14		Amopol Realty Corp. 24 Roosevelt Ave.	1,247.93
48	16		Amopol Realty Corp. 30 Roosevelt Ave.	1,881.86
48	19		Amopol Realty Corp. 34-46 Roosevelt Ave.	13,859.36
65	3		De Marco, Richard 61-71 Mill St.	1,028.78
66	1		Parlo Bros, Inc. 16 Washington Ave.	7,532.22
70	1		Canyon, Mark & Deborah 10 Valley St.	2,033.57
73	5		Cicchio, Joseph 118 Washington Ave.	3,191.10
73	12		Sant, Hatinder & Rumlinder 134 Washington Ave.	366.19
79	51		Robstein, L. & J. c/o Essex Fiber Mill 235-353 Cortlandt St.	34,079.54
80	7		Sunny Gate Trading Corp. 306-308 Washington Ave.	10,257.73
80	8		Sunny Gate Trading Corp. 310 Washington Ave.	907.61
86	13	CG038	Dey, C. William 6 Essex St.	1,358.84
88	3		Devita, Edward & Rose 386 Washington Ave.	205.52
89	16		DeBacco, Joseph & Evelyn 470-482 Washington Ave.	2,537.52
89	20		Panzitta, Nicola 478-482 Washington Ave.	3,379.55
92	28		Rovelli, Lenore V. Est. c/o F. Rovelli 335 Ralph St.	2,991.33
104	34		Nota, Filippo & Zoila 106-108 Greylock Ave.	5,213.05
104	37		Nota, Filippo 112 Greylock Ave.	11,854.93
116	52		Patrick 132-134 Mill St.	13,823.13
118	6		Idrovo, Flavio & Italia 23-25 Howard Pl.	168.10
118	36		Fredricks, Bridget & Peter 34 Van Rensselaer St.	3,234.07
119	35		Rusignuolo, Anthony & Carmela 20 Howard Pl.	557.57
119	36		Rusignuolo, Anthony & Carmela 22 Howard Pl.	3,658.89
119	37		Rusignuolo, Anthony & Carmela 24 Howard Pl.	568.21
120	27		Napolitano, Joseph 125 Washington Ave.	209.05
130	26		Ferry, Jr. Frank 43 Prospect St.	4,467.66
133	30		Washington Ave. Associates, L.P. 325-335 Washington Ave.	25,101.11
137	48		Fallacara, Joseph M. & Janet T. 30 Rossmore Pl.	433
137	54		Capaldo, Kathleen A. 42 Rossmore Pl.	1,595.71
151	4		Bui, Thuan, Lan Huong, Van Quan & Thua 544 Washington Ave.	4,541.19
151	11		Baker, Frederick H. Jr. & Diane 558 Washington Ave.	2,842.83
153	12		Gule, George & Norma Long 134 Floyd St.	3,983.52
168	10		Bridge, Peter J. 136 Beech St.	7,652.84
180	22		Borowski, Walter & Barbara 19 Church Terr.	3,355.44
185	24		Valentin, Miguel & Romona 101 William St.	3,570.64
186	3		Tuosto, Angela 68 Clinton St.	3,322.11
191	105		Vaz, Maria M. 178 Belleville Ave.	1,062.43
				1,469.27

Block	Lot	Qualif.	Name of Owner Property Location	Total Amount	Block	Lot	Qualif.	Name of Owner Property Location	Total Amount
194	78		Shenocca, Carmela 93 De Witt Ave.	4,865.85	723	27		Nismar Realty Co. Inc. 55 Rocco St.	878.97
194	131		Long, Philip 208 Belleville Ave.	4,761.81	723	28		Nisvoccia, Angelina Estate 53 Rocco St.	868.12
197	22		Montalbano, Joseph, Etal 2 Lloyd Place	4,270.39	723	30		Nismar Realty Co. Inc. 39 Rocco St.	868.12
198	8		Ullasas, Francis & Mary 172 De Witt Ave.	945.50	739	55		Chimento, Carmen & Ellen 53 Florence Ave.	987.85
					741	13		Gatto, Ted & Greco, Louis 145 Newark Ave.	3,693.15
					742	47		Cappetta Mildred & James 217 Belmont Ave.	2,370.00
217	26		Herrmann, John W. 27 Bremont St.	3,965.12	742	47	A	Cappetta, James V. & Mildred Rear 217 Belmont Ave.	62.17
220	11		Hutchinson, Robert & Andrea 422 De Witt Ave.	4,197.99	746	8		Cuccizza, Joseph 24 Florence Ave.	880.53
220	32		Mador, John A. & Tamara A. 93 Bell St.	3,437.12	746	10		Cuccizza, Joseph 26 Florence Ave.	348.14
225	2		Youssef, Miamdoh 232 Linden Ave.	1,703.35	746	36		Nisvoccia, Angelina Estate 80 Florence Ave.	2,360.36
231	15		Shaffer, Richard 131 Bremont St.	1,954.34	753	6		Frisinga, Joseph & Remy 64-68 Franklin St.	1,319.00
248	20		MacDonald, Paul & Janet 8 Smith St.	734.15	756	34		Constantino, Frank Jr. 37 Watchung Ave.	2,639.34
					760	14		Della Volpe, Gladys 34 No. Seventh St.	1,551.77
255	14	C00A1	Union Court Condos 61-67 Union Ave.	1,731.37	760	22		Della Volpe, Gladys 11 Franklin St.	6,498.82
255	14	C00A3	Union Court Condos 61-67 Union Ave.	1,731.37	775	8		Palme, Frank & Steven 9 Belmont Ave.	5,055.98
255	14	C00A5	Union Court Condos 61-67 Union Ave.	1,731.37	780	5		Del Russo Medesimo & Madeline 375 No. Tenth St.	2,506.73
255	14	C00A6	Union Court Condos 61-67 Union Ave.	1,731.37	780	23		Public Callie 24 Lake St.	2,744.33
255	14	C00B3	Union Court Condos 61-67 Union Ave.	1,731.37	782	4		Sabendorio Agostino & Decristoforo 176 Heckel St.	896.85
255	14	C00B4	Union Court Condos 61-67 Union Ave.	1,731.37					
255	14	C00B5	Union Court Condos 61-67 Union Ave.	1,731.37	790	7		Arbo, Inc. 14 Belmont Ave.	1,266.28
255	14	C00B6	Union Court Condos 61-67 Union Ave.	1,731.37	790	11	C0004	Angelo, Philip 22-28 Belmont Ave. B2	493.26
255	14	C00D5	Union Court Condos 61-67 Union Ave.	2,213.77	790	54		Mattia, Jean P. 8 Bloomfield Ave.	5,861.94
256	21		Cornish, John J. 49 Union Ave.	2,841.42	791	4		Nisvoccia, Angelina Estate 96 Belmont Ave.	2,772.85
262	14		Crocco, Giorgio & Ida 34 Mt. Prospect Ave.	259.69	791	7		Nisvoccia, Angelina Estate 72 Belmont Ave.	3,221.95
262	20		Giuliano, Marie 50 Mt. Prospect Ave.	4,237.46	792	26		Nisvoccia, Angelina Estate 49 Belmont Ave.	2,857.82
262	41		Aurienma, Geraldine 90 Mt. Prospect Ave.	40.22	792	27		Nisvoccia, Charles Ross Estate 47 Belmont Ave.	965.79
			Nisvoccia, Angelina Estate 3 Cedar Hill Ave.	6,138.32					
			Aurienma, John & Geraldine 83 Mt. Prospect Ave.	2,281.58					
			Cummings, Everett & Diane 23-25 Van Ryeer Pl.	789.67					
			Piskura, Josephine 191 Malbone Ave.	2,899.94					
			Corio, Philip D. & Frances D. 17 Campbell Ave.	1,921.89					
			Hidreth, Charles & Barbara 19 Parkway Ave.	3,650.52					
			Rinaldi, Florence (L.E.) & Rinaldi, Etal 48 Garden Ave.	3,952.87					
			Ottano, Wanda & Posada, Mariano & F. 44 Crescent Terr.	342.40					
			Nisvoccia, Angelina Estate 18 Perry St.	6,570.90					
			Fernandez, Oscar & Susana 336 Joralemon St.	2,960.87					
			Maiella, Richard R. & Lena 20 Belmoir St.	1,812.67					
			Corbo, Lawrence & Jovina 182 Forest St.	2,568.51					
			Barnett, Howard & E.M. & Prieto M. 132 Belmoir St.	5,946.05					
			Faltraco, Joseph 6 Federal St.	4,183.99					
			Faltraco, Joseph 44 Emmett St.	1,155.65					
			Hange, Richard & Maureen 167 Nolton St.	783.01					
			Bliss, Walter R. Sr. 22 Mitchell St.	2,716.55					
			Bannon, Virginia 660 Mill St.	3,457.19					
			Siconolfi, Jerry & Louisa 366 Franklin Ave.	3,320.75					
			Russomanno, Michele 96 Ligham St.	4,847.61					
			Carnavale, Joseph & Assunta 407-409 Franklin Ave.	6,510.82					
			Longobardi, Maria A. 79 Gless Ave.	5,657.66					
		CF015	Faranda, Joseph & Kathleen 730 Mill St.	1,754.59					
			Baglione, Geraldine 32 Pleasant Ave.	6,561.40					
			Schick, Theresa & George 127-129 Carpenter St.	2,023.62					
			Schick, Theresa & George Int. 127 Carpenter St.	118.27					
		C0019	Bridgebrook Dev. Group Ltd. 725 Joralemon St.	594.81					
		C0046	Bridgebrook Dev. Group Ltd. 725 Joralemon St.	594.81					
		C0073	Bridgebrook Dev. Group Ltd. 725 Joralemon St.	594.81					
		C0081	Main Development Group 725 Joralemon St.	1,119.35					
		C0087	Mongello, Anthony & Barbara 725 Joralemon St. U 87	2,809.27					
		C0133	Main Development Group 725 Joralemon St.	622.90					
		C0149	Bridgebrook Dev. Group Ltd. 725 Joralemon St.	761.28					
		C0150	Bridgebrook Dev. Group Ltd. 725 Joralemon St.	761.28					
		C0226	Main Development Group 725 Joralemon St.	594.81					
			Klesmer, Wayne & Adoracion R. 513 Franklin Ave.	493.82					
			Dunn, Frank M. 13 Louise Ct.	806.06					
			Nisvoccia, Angelina, Estate of 2-10 Sanford Ave.	770.46					
			Village Builders & Home Repairs Inc. 1546 Brighton Ave.	1,269.62					
			Village Builders & Home Repairs Inc. 138-164 Brighton Ave.	632.05					
			Paparo, Frank & Riggi, John 121 Harrison St.	3,380.48					
			Nisvoccia, Angelina Estate 35 Crozzo St.	868.12					
			Nismar Realty Co. Inc. 31 Crozzo St.	868.12					
			Nismar Realty Co. Inc. 9-11 Crozzo St.	1,410.69					
			Nismar Realty Co. Inc. 124 Newark Ave.	546.93					
			Nisvoccia, Angelina Estate 64 Wessing Ave.	2,192.73					
			Nisvoccia, Angelina Estate 55 Brighton Ave.	536.30					
		C001	Brighton Arms Condos 55 Brighton Ave.	787.00					
		C0017	Aarhus, Michael 59-61 Brighton Ave.	1,588.44					
			S. Remondino Corp. c/o V. Scirica 18 Harrison St.	875.33					
			Nismar Realty Co. Inc. 61-67 Newcomb St.	30,414.06					
			Nismar Realty Co. Inc. 68-76 Newark Ave.	30,414.06					

RED SEVENTY EIGHT DOLLARS

AND FOUR CENTS (\$1,329,778.04) together with the costs of this sale.

The Sheriff reserves the right to adjourn the sale from time to time as provided by Law.

Newark, N.J. December 7, 1992
ARMANDO B. FONTUZZO, Sheriff
Norris, McLaughlin & Marcus, Attorneys
Belleville Times
Dec. 17, 24, 31, 1992
Fee: 7, 1992
Fax: 822.44

No. B92-541

SHERIFF'S SALE

SUPERIOR COURT OF NEW JERSEY, CHANCERY DIVISION, ESSEX COUNTY, DOCKET NO. F-106-92 LEHIGH FINANCIAL CORPORATION, A NEW JERSEY CORPORATION, PLAINTIFF vs. A. DINO BRAZ, d/b/a DINO BRAZ, ET AL, DEFENDANTS. Execution For Sale of Mortgaged Premises

By virtue of the above stated writ of Execution, to me directed, I shall expose for sale by Public Auction, in SHERIFF'S OFFICE, Essex County Courts Building in Newark, on Tuesday, the 12th day of January, 1993, at one-thirty P.M. (Prevaling Time) All that certain place or parcel of land, being lots 13 and 14 in Block 86, Lots 41 and 42 in Block 89, part of Lot 18 in Block 86 and part of Lot 43 in Block 89, situate in the Township of Belleville, County of Essex and State of New Jersey, being more particularly bounded and described in accordance with the Plat of Survey prepared by George R. Proffitt, Licensed Land Surveyor No. 10202 of Richland, Lupo & Proffitt, L.S., 470 Roosevelt Ave., Newark, N.J. dated May 7, 1982, and revised May 23, 1985, as follows: BEGINNING at a point in the northerly line of



THE CLASSIFIEDS

HOURS:
Mon.-Fri. 9am-5pm
Call:
667-3000

All Classified Ads appear automatically in all three of our papers: The Nutley Sun, Belleville Times, Bloomfield Life.

Transient Ads — Paid In Advance

First 4 lines \$16.91
Each Additional Line \$1.52
Borders Are Available
For a Fee of \$10.00
Contract Rates Available



Are Accepted
Call Today
667-3000

Check your Ad the first day of publication

CREDITS:
Credits & adjustments are to be made only for errors which significantly alter the effectiveness of the ad, such as a wrong telephone number or price. Credits will not be issued for typographical errors or misspelled words. The newspapers can assume responsibility only for MAJOR errors in the first day's publication.

Classified Deadline Tuesday 12 Noon

Name		
Address		
Phone		
Category		
<input type="checkbox"/> Border \$10.00 Additional		
Run Date	Number of Insertions	
<input type="checkbox"/> Check Visa M/C No.		

**PARTS
ACCESSORIES
SERVICES**

**PARTS
ACCESSORIES
SERVICES**

BIB'S
WILL PAY CASH FOR ANY JUNK
CAR IN ANY CONDITION
Highest prices paid for late models.
USED CARS & TRUCKS
USED PARTS 991-4246 or 991-0081
54 Stover Ave., Kearny

**ATTENTION!
AUTO PARTS**
WILL PAY CASH FOR ANY JUNK
CAR IN ANY CONDITION
Highest prices paid for late models.
USED CARS & TRUCKS
USED PARTS 991-4246 or 991-0081
54 Stover Ave., Kearny

ATTORNEYS

BARRY S. MILLER
ATTORNEY AT LAW
1-800-660-0324
EMPHASIZING
*Bankruptcy *Corporate
*Real Estate *Collection
*Personal Injury
FREE Consultation
Evening/Weekend Hours
1135 Broad St. CLIFTON

AUTO SALES

1984 CADILLAC
Fleetwood Brougham
Coupe
Very low mileage. Fully
loaded without roof, car
phone and many extras.
Mint condition in and out.
Must sell due to illness.
Best Offer!
743-9988 after 7pm.
FOR SALE
'91 Mercury Cougar LS
Auto V-6, AC, PS, PB,
tilt, PL, P-seat,
cruise, tint, AM/FM
stereo/cass., rear def.,
remote alarm, 4 new tires.
Dark blue w/grey cloth int.
Garage kept. 21,000 miles.
\$13,000 or BO
661-1174
**FREE REMOVAL OF
JUNK CARS**
24 HR SERV
CALL TWIN TOWING
751-8430
WANTED ANY CAR
CASH PAID
24 HRS A DAY
201-429-1324

**AUTO
WRECKERS**

JUNK CARS WANTED
*Free Tow Away
*Same Day Pick-Up
(In Most Cases)
S.O.S. TOWING, INC.
429-8471 Bloomfield
481-2610 Newark

**GENERAL
NOTICES**

Reader Of Best Sellers
will narrate novels
to bedridden of Hospice
\$5.00 Hr. Rich 748-6436

LOST & FOUND

Charcoal Grey Cat
Name: DUSTY. Last seen
Watching Ave. Btwn.
Ridgewood & 1st St.
Call 429-8100 M-F or
338-0807 aft 5. REWARD
**PERSONAL
NOTICES**
ADOPTION:
Active, fun-loving
couple offers lifetime
hugs, love, laughter to
your baby. Happy home
near parks, playgrounds,
adoring relatives await
your precious gift.
(215) 667-0839 Collect.

DIVORCE KIT
DO IT YOURSELF
M/F, 9am-5pm
(908) 782-5540

INTERNATIONAL INFANT ADOPTIONS BY PRIVATE ATTORNEY
OF EUROPEAN ANCESTRY. BIRTH CERTIFICATE ISSUED IN ADOPTIVE PARENT'S NAME, NO WAITING LISTS. CHARLES M. ELEFANTE, ESQUIRE
215-463-1777

NOVENA TO ST. JUDE.
This novena has never been known to fail. This novena must be said for 9 consecutive days. Publication must be promised. Oh, Holy St. Jude, Apostle & Martyr, great in virtue and rich in miracles, near kinsman

of Jesus Christ, faithful intercessor of all who invoke your special patronage in time of need, to you I have recourse from the depth of my heart and humbly beg to whom God has given great power to come to my assistance. Help me in my present urgent petition. In return, I promise to make your name known, and call you to be invoked. St. Jude, pray for us all who invoke your aid. Amen. Say 3 Our Fathers, 3 Hail Marys and 3 Glorias. J.C.

PERSONAL NOTICES

CALL YOUR DATE!
Romance and fun dial
1-900-933-2222. Other
lifelines
1-900-740-6600.
\$1.39/min. Ages 18+.
Gals Call 215-896-9874
(Dial Service)
63 E. Lancaster Ave.
Ardmore, PA)

CHILD CARE

NANNY'S
INFANT CARE CENTER
Full Day Sessions
6 weeks to 2 Yrs. Old
204 Washington Avenue
Belleville 759-1524
Director: Dolores Arlt
EMPLOYMENT

DATA ENTRY/KEY PUNCH OPER.
10,000 key strokes per hour minimum.
Days - Short term
Call Helene Earl
991-2449

WAREHOUSE HELP
\$6.50 per hr. pick orders, shrink wrap pallets, & operate forklift. Must be good with figures. Full time.
VAN NEST PLASTICS
555 CORTLAND ST.
BELLEVILLE

EMPLOYMENT WANTED

LOOKING TO DO P/T OFFICE WORK EVENINGS & OR WEEKENDS. Word processing, PC experience. Also, paralegal degree. ALSO, WORK FROM HOME ON WORD PROCESSOR. PICK UP & DELIVER. Please call after 6pm leave message 667-8565.

GENERAL OPPORS.

*MODELS/SINGERS
*DANCES/KIDS
TEENS*TWENTIES*
COVER GIRL STUDIO
261-2042 LIBWO 193200
River Edge

ALL-PHASE EMPLOYMENT SERVICE
382 Franklin Ave.
Nutley, N.J.
661-W-O-R-K
997-W-O-R-K
Permanent & Temporary
F/T & P/T positions
Vacation Plan

AVON SALES representative needed F/T - P/T, All areas.
Call Carla
1-800-395-3383

GENERAL OPPORS.

COLLEGE STUDENTS
\$11.00 TO START
Special 1 to 5 week semester break work program. Possible part time next semester. Excellent resume experience. Local office of int'l co. Call for interview.
201-239-3382

DATA ENTRY
Clinical position for kit cab dist. Excel computer skills, detail oriented, good with figures, experienced. 751-7700

DRIVERS
OVER 100 NEW CONVENTIONAL ARRIVING! GOOD PAY AND BENEFITS, NO RELOCATION. CALL VERNON MILLING CO., INC. LAURENS, SC. AT 1-800-964-8743 or 1-803-682-4196

EARN UP TO \$346.00/Week Assembling Christmas and holiday decorations year round, at home. Work available across the United States. For more info send a self-addressed stamped envelope to Magic Christmas #360-4736 Onondaga Blvd., Syracuse, NY 13219-3303.

F/T Sales Person needed for customer service. Computer exper. helpful, but will train. Perfect for recent college or HS grad. 8:30-4:30
Call Roger 485-2611

MUSICIANS WANTED
UNKNOWN P R O M O T I O N A M M T U R E MUSICIANS FOR POSSIBLE RECORDING CONTRACT. L O G R O U P S V O C E I N S T R U M E N T S . CALL TOM 1-800-444-6556. FREE CALL. DAY/NIGHT. AMAZING RECORDED MESSAGE. NO OBLIGATION.

OFFICE ASSISTANT
General office work, front desk, wordprocessor & computer. N. Newark/Belleville line, start Jan 4, 1993. Send resume & salary desired to Personnel Dept. 1407 McGrier Hwy Newark, NJ 07104
RECEPTIONIST - FT
start immd, resp mature, reliable, indiv. Divers. duties. 751-6999

TEACHER ASSISTANTS
Full & Part Time
Clara Maass Medical Center, a 475 bed acute care facility located in suburban Belleville, NJ, currently has excellent full-time and part-time positions available for Teachers Assistants at our growing on-site educational day care center. Previous experience preferred.

Please call or send resume to Deborah L. Patti, Human Resources Recruiter at (201) 450-2117, Clara Maass Medical Center, One Franklin Avenue, Belleville, NJ 07109. An EOE/AA.

CLARA MAASS MEDICAL CENTER
an affiliate of aadventist

WE'LL PAY YOU to type names and addresses from your home \$50.00 per 1000. Call 1-800-896-1666 (\$1.49 min/18yrs.+) or Write: PASSE - W6737, 161 S. Lincolnway, N. Aurora, IL 60542

CLERICAL light phone work & filing. Apply in person: P.N.C. 115 E. Centre St, Nutley

BUSINESS OPPORS.

DELI & PROPERTY
Belleville (Washington Ave) includes beautiful 6 rm apt. Parking. Good gross w/additional growth potential!! Asking \$300,000, but owner is motivated!!
D. Paul Lettini
R.E. Broker 450-8121
Eves. 450-0958

ARTICLES FOR SALE

ENCYCLOPEDIA
20 volume set.
new condition, very reasonable, excellent Christmas gift. Call Dan 473-3900 btwn 1 and 5

WANTED
Used Air Conditioners CASH!!
482-3681

WOLFF TANNING BEDS
New Commercial-Home Units From \$199.00. Lamps - Lotions - Accessories. Monthly Payments Low As \$18.00. Call Today FREE NEW Color Catalog
1-800-228-6292

ARTICLES WANTED

ESTATE SALES
Conducted or will purchase contents, fine jewelry, costume jewelry, furniture & rugs.
Call 748-9501
Leave Mess. for Liz
recent college or HS grad.
8:30-4:30
Call Roger 485-2611

PM BUYING TOOLS
*Old *New *Used
*Any Type *Any Quantity
CALL "BEN"
696-4908 4-6 PM weekdays.
After 6:30 PM weekends.
Licensed Gun Collector
Cash for
*Guns *Swords *Daggers
*Bayonets
*Military Items
Registered Appraiser
CALL 783-6145

LIONEL AND OTHER TRAINS
COLLECTOR
PAYS TOP PRICE
CALL 201-334-8709 or 201-635-2058

CONDOS FOR SALE

Belleville - By owner.
3 BR Condo, \$100,000.
Call for details, 759-7788, ask for Frank or Leslie.

FURNITURE

*Used Filing Cabinets
*Chairs *Desks
EDELSTEIN OFFICE FURNITURE WISE.
946 Market St.-Paterson
Cor.Lakeside Ave. & R180
523-6153

FOR SALE!
2 wood trimmed, high back fireseat chairs. Melon velvet.
Excellent Condition!
\$150. takes the pair, but willing to separate.
Call Michelle at 748-8729 aft. 6pm
R.E. Broker 450-8121
Eves. 450-0958

LIVING ROOM SET
White leather sofa & matching chair. 4 mos. old (orig price \$3,000). \$2,000 firm. After 5:30
Call 661-2194

REAL ESTATE



EQUAL HOUSING OPPORTUNITY

All real estate advertised herein is subject to the Federal Fair Housing Act of 1968 which makes it illegal to advertise "any preference, limitation, or discrimination based on race, color, religion, sex, national origin, familial status, or handicap, or intention to make any such preferences, limitation, or discrimination"

We will not knowingly accept any advertising for real estate which is in violation of the law. All persons are hereby informed that all dwellings advertised are available on an equal opportunity basis.

To complain about discrimination in housing, call HUD's national toll free number:
1-800-424-8590

INDUSTRIAL & COMMERCIAL

EAST ORANGE
Former McDonalds. Free site incl. Plenty of pkg. ALLIED RLTy 575-8410

HOUSES FOR SALE

Belleville: Contractors, 32 x 32 gar, 23 BR Col. X-Lg lot & rooms. Painted in & out. Side lot avail. A-1 area \$139,900 347-2161

BELLEVILLE
2 Fam-\$172,900
26 Hornblower Ave.
& 6.5 3m. rms on 3rd fl., sep. heating units, alum. siding, 2 car gar. immaculate. Must See!!
D. Paul Lettini
R.E. Broker 450-8121
Eves. 450-0958

BLOOMFIELD
FOR SALE BY OWNER
6 room, 3 BR Colonial.
L/R w/frpl, DR, 1 1/2 baths, fin. bent, new vinyl siding, new roof, all new replacement windows, pool w/deck, patio, many extras. Asking \$152,000.
743-3826

MANAHAWKIN WATERFRONT
4 bedroom, 2 bath home with easy bay access. Aluminum siding, fireplace, sun deck, and garage. All for \$169,000.
G. ANDERSON
AGENCY, REALTORS
1-800-444-8507

NUTLEY
COL, 4 BRS, 2 1/2 baths, many extras. On 50 x 150 lot; quiet st. \$190's - offer!
SPACIOUS home.
"Prime loc", 10 rms, 2 1/2 baths, 2 car gar, C/A, lg corner lot. Low \$300's.
CONDOS
2 BRS, 1st fl. Gateway. Must sell! A-1 cond. \$90,000 - offer!
1 BR, 1st fl. Sleepy Hollow. \$81,990 or rent \$510.

BELLEVILLE
INVEST - 3 Fam/lg apts; sep heat, prking. \$265,000.
CONDO - 2 BRS, 3rd fl, on Nutley line! - Many extras. 129,500 - offer!
REALTOR:
RECORDS REALTY
3 High St., Nutley
667-5500

INDUSTRIAL & COMMERCIAL

EAST ORANGE
Former McDonalds. Free site incl. Plenty of pkg. ALLIED RLTy 575-8410

HOUSES FOR SALE

NORTH BEACH DUPLEX
High income producer with gas heat- fourth house from ocean with bay access. Owners anxious. This one won't last. Offered at \$168,900.
BAYSIDE AGENCY
1-800-669-7917

RES/COM LOTS
5 ACRE RANCIERS NEAR five beautiful lakes, 2 hours from gambling. Great investment. Owner will finance. \$2990.00. \$500 down, \$75 per month.
1-800-223-4763

BELLEVILLE'S LUXURY COMMUNITY
1 & 2 Bedroom Ultra-modern garden apts. in a quiet community. W/W Carpeting, H/W, Laundry Room, and Safe/Storage are included.
(201) 759-8379

Belleville-4 lg mod rms, 2 br, 2nd flr of young 2 fam.Aval 2/1. 759-1923

BELLEVILLE
1 & 2 BR beautiful garden apts. H&H/W sup. For info call 450-1641

Belleville - 3 rms. Avail Jan 1. One month security.
Call 759-1022

Belleville-3 rms, 1 BR, EIK, L.R, storage rm. \$495. plus utls. 492-2272/759-8280

Belleville 3rd. fl. 3Rm. 1BR. \$450 mth. + uttl. Avail Jan 1.
Call 751-7015. Aft. 6PM

BELLEVILLE 3 1/2 rms, 3rd flr, h/w in incl. \$450.
3 1/2 rms grdn apt. h/w & gas incl. \$600.
4 rms, 2nd flr, h/w & gas incl. \$500.
5 1/2 lge rms, 2nd flr, h/w incl \$800.

BLOOMFIELD - 3rms 3rd flr supply own utls. (off Broughton Ave) \$500.
NUTLEY 3 rms, 2nd flr, supply own utls. \$500.
METRO AGENCY REALTOR 751-3400

HOUSES FOR SALE

BELLEVILLE
2nd flr, 4 spcous rms, parking avail. W/closets. New windows. Freshly painted. \$650. plus utls. No pets.
Call 661-3687

BELLEVILLE
4rms, 2 BRS. \$650 + uttl. Avail Jan 1.
** MARZULLI **
Realtor 743-2306

BELLEVILLE
First floor. Mod 3 rms, \$500 + uttl.
AUTERI REALTOR 933-0306

Bloomfield 1 lg 1 BR, ground level apt, in security building, new carpet, free heat, H/W gas & elec. \$595.
Call 743-8247

BLOOMFIELD - 3 1/2 lge mod rms, garden apt, H&H/W, washing facilities on premises & parking.
Call 743-8886 or 748-0302

Bloomfield - 2 1/2rms, \$550 incl uttl. N.Y. bus at door. Call 429-8444

BLOOMFIELD St. Vals 4 rms, 2nd. Cold Flat Avail 2/1/93. No Pets
Call 743-0059

Bloomfield 3 1/2 rms, H/W, gas, fridge supp. Nr. trans, schools & shops. \$525.
743-0253 th 10pm

Bloomfield - 3 rms, 3rd flr. Avail immed. \$485 + sec & uttl. Call after 5 P.M. 743-8748

Bloomfield Location & Value
3 1/2 rms, spotless, w/new kit & new apt, newly fin hardwood floors, great closets. H&H incl. On site laundry, well maint, trans to NY & all conveniences at front door. Call 743-7261

Now you can phone in your classified ad and charge it to your VISA or MasterCard account

Call 667-3000
Give us the copy for your ad and your VISA or MasterCard account number
It's as easy as that!
The deadline is noon Tuesday for that week's issue, but the best times to call are Thursdays and Fridays.
Orechio Publications
800 Bloomfield Ave. Nutley, N.J. 07110
The Nutley Sun, Belleville Times, Bloomfield Life

APARTMENTS
UNFURNISHED

BLOOMFIELD
3 mod rooms, w/ Kite & bath. Quiet area.
Call 660-0724

BLOOMFIELD
3 1/2 rms. H/W & gas incl'd. Call 748-4825 or 661-0725

BLOOMFIELD - 4 rms. Avail 1/1. H/W incl. \$750. neg.
Call 759-3343

BLOOMFIELD
3 large rooms. \$525 incl heat/H/W.
★ MARZULLI ★★
Realtor 743-2306

NEWARK
(Belleville line.) Verona Ave. All rms. freshly decor. 1 or 2 B.R.s. pring. \$425. mth. Hurry!
D. Paul Lettini
R.E. Broker 450-8121
Even. 450-0958

APARTMENTS
UNFURNISHED

NUTLEY
3 rms, \$600 + util.
3 1/2 rms, \$610 h/w/h incl.

4 rms, \$675 + util.
4 rms, \$700 + util.
5 rms, \$700 heat incl.

BELLEVILLE
4 rms, \$600 h/w/h incl.
3 rms, \$660 h/w/h incl.

5 rms, \$700 + util.
5 rms, \$800 + util.
5 rm Condo, \$850 + util.

BLOOMFIELD
2 1/2 rms, \$425 h/w/h incl.

3 rms, \$495 h/w/h incl.
3 rms, \$650 h/w/h incl.
3 rm Condo, \$800 all util incl.

5 rms, \$850 + util.
CLIFTON
3 rms, \$695 + util.

COSTANTINE REALTY
REALTOR 667-7070

NEWARK 3rd fl apt. Nr Columbia Hosp. \$500 H/W incl. Ref. Req. Call 661-0311

No. Newark near Columbus Hospital. Quiet, cozy 4 rm. apt., 3rd fl. \$450. mth. 482-5775

NUTLEY
Mini 1 br Condo, \$750 h/w/h incl.

Mini 2 br/2 bath Condo, \$1125 + util.

BLOOMFIELD
Mini 1 br Condo w/gar, \$700 h/w/h incl.

6 lg mod rms, \$825 + util. 5 ultra mod rms w/gar, \$1100 + util.

BELLEVILLE
4 br home, \$1150 + util. 2 br/2 bath Condo, \$975 + util.

MONTREAL AGENCY
759-4900

APARTMENTS
UNFURNISHED

NUTLEY
5 rms, 2 B.R.s, 4 Family Duplex. Land hook-up, gar, 2nd fl. \$700 heat incl.

★ MARZULLI ★★
Realtor 743-2306

NUTLEY
3 1/2 rm Garden Apt. Land. pring \$700 heat/H/W.

★ MARZULLI ★★
Realtor 743-2306

CONDOS
FOR RENT

BLOOMFIELD
CONDO - 3 1/2 rms, garage, laundry, 1 BR, A/C. \$675 incl heat/H/W.

★ MARZULLI ★★
Realtor 743-2306

CONDOS
FOR RENT

BELLEVILLE
SALE OR RENT
Bridgebrook Condos
725 Joralemon Street
(Off Franklin Ave.)

Brick, 1 & 2 B.R.s, situated on 8 acres of beautiful landscaped grounds. Garage & pool incl in price. Private entrances. Low maintenance incl heat, hot water & gas. P.O.K.

VA & FHA approved. Sales \$85,000 - \$95,000. Rentals \$700 - \$850. Call Marge.

284-0904
PATRICIAN Associates Realtors

OFFICE
RENTALS

Trenton State House Historic District. 1000-2200 SF office space. Third floor walk-up. Kitchen, bath, A/C. Ideal for Lobby or Association.

\$350-\$850 per month. 609-394-5050

RESIDENTIAL
RENTALS WTD.

Attention Landlords! Apts wanted. We screen all prospective tenants. No fee to landlord. **COSTANTINE REALTY**

289 Franklin Ave., Nutley
REALTOR 667-7070

ROOMS

NUTLEY. Furn rms. Retired or working gentlemen per. \$65-\$85 per week. Parking, 1 week security. 667-0571

Holiday Savings

La France Deli & Caterers

CATERING FOR ALL OCCASIONS

COUNTER SERVICE

HOT & COLD BREAKFAST AND LUNCH

DAILY HOMEMADE SPECIALS

SUBS & 1/2 SUBS • HOMEMADE SOUPS

FULL ITALIAN CUISINE

3 & 6 FT. SUBS

FREE DELIVERY

743-6351

137 La France Ave., Bloomfield

TIPS N TOES

559 Bloomfield Ave., Bloomfield

743-6222

Nail & Facial Salon

Holiday Specials

Tips & Wraps w/manicure... \$45.00

Set of Wraps w/manicure... \$25.00

Manicure & Pedicure... \$23.00

European Facial... \$25.00



667-3707

86 Centre St., Nutley

THE WISTARIA

1049 Broad St. • Bloomfield, NJ

(Brookdale Shopping Center)

338-7160

Hallmark Cards & Gift Shop

20% OFF Lenox Giftware & Madame Alexander Int'l Dolls

M-F 9:30 to 8pm

Sat. 9:30 to 5:30 Sunday 11am

MARY'S THEATER PARTIES

Dec. 16 Christmas Spectacular-Radio City

Dec. 27 Resorts A.C. \$5.00 coin-\$5.00 Deferred

Jan. 17 "Tony & Tina's Wedding"

Jan. 31 Ice Capades-Byrne Arena-Madewalds

Feb. 12 "Phantom of the Opera"

Feb. 15 "Cats" on Broadway"

Feb. 19 "Les Miserables"

Feb. 26 Pegasus-Madewalds Racetrack

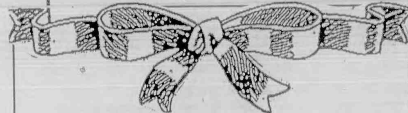
LIMITED SEATS/BOOK EARLY!

All the above include Orchestra Seats, Dinner, Transportation, Taxes & Tip for Driver.

Individuals or Groups Call for Information

998-1268

Gift Certificates Available



The Ultimate Gift... Fur

Jackets 7/8 Coats

Strollers Full Length Coats

in a variety of luxurious furs

- ALSO -

Earmuffs \$45 Evening Bags \$80

Hairbands \$30 Headbands \$125

Teddy Bears \$45

and other fur gift items

42 Church Street • Montclair

744-6364

Mon. - Sat. 9:30-5:30 Call for Holiday Hours

SAY...

HAPPY HOLIDAYS

With a Gift Subscription to the

- ☐ Nutley Sun
- ☐ Belleville Times
- ☐ Bloomfield Life
(Check one)
- ☐ Check here if Senior Citizen



Give a One-Year Subscription, starting January '93

\$16.00 Regular Subscription (Save \$10.00 Off Newsstand Price)

\$ 8.00 Senior Citizens (Save \$18.00 Off Newsstand Price)

We'll even notify the recipient with a Holiday greeting.

TO:

Name

Address

Phone

Zip

FROM:

Name

Address

Phone

Zip

Clip this ad and mail with your check to:

Orechio Publications

800 Bloomfield Avenue • Nutley, (201) 667-2100



The SERVICE DIRECTORY

The best people to service you are only a phone call away.

Why not call them today?



CLEANING SERVICES

A POLISH TOUCH
CLEANING SERVICES
We Clean houses, offices & professional Bldgs. Thorough job work. Holiday Cleaning.
998-0426

STARLIGHT
CLEANING SERVICE
*Homes/Apts/Offices
*Reasonable Rates
893-9637

ELECTRICIAN

AURIEMMA
ELECTRIC
Electrical Contractors
*Res/Com/Indus
*SMOK-ALARM'S
*A/C & ceiling fans.
Dis. prices

*New/Old work *Repairs
*Promot. Prices & Service
24 HR. Emergency Service
15% off with this Ad
Over 50 yrs of Service
Lic #1660 Fully Ins.

BONDED
If electricity is involved
CALL US!
751-5926

DE LIZIO ELECTRICAL
CONTRACTING
*Ind. *Res. *Com.
*Free Estimates
No job too small/too far
Call 661-2917
Licence No. 11008

TALBOT ELECTRIC
Lic #134 Fully Ins.
Realistic Prices &
Prompt Reliable Service
Call MIKE 450-4308

ENTERTAINMENT

HAVE A MAGICIAN
FOR YOUR NEXT
BANQUET OR PARTY
ADULTS-CHILDREN
HARRY PARKHURST
939-7960

GUTTERS

*GUTTERS & LEADERS
Cleaned, repaired, or
replaced. Also roof &
siding repairs. Interior &
exterior painting.
CALL AL ROBERTS
751-5462 Free Est.

HOME IMPROVEMENT

*COPPOLA &
SONS, INC.
Est. 1942 50 yrs. Exp.
Aluminum & Vinyl Siding
Roofs/Doors/Additions
Repairs/Windows/Gutters
429-9266 Fully Insured

HOME IMPROVEMENTS

*Carpentry *Kitchens
*Plumbing *Electric
*Electrical *Rec. Rooms
*Decks *Porches *Encs.
*Roofing *Additions
*Windows/Door Replic.
For Free Estimates
CHARLIE 759-4317

HOME IMPROVEMENT

NICOSIA &
SONS
CONSTRUCTION CO.,
INC.
Built on
Recommendation
35 Years Experience
*Add a Level *Dormers
*Bathrooms
*Additions
*Kitchens

*Finished Basements
Free Est. Fully Ins.
751-7171

ROOFING

GUTTERS
*Siding - Vinyl & Alum
*Wildlife control.
*Chimney caps. Free Est.

Call Bob
751-4155

*Cleaned & Flashed
*Minor Tree Trimming
338-0448

MASONRY

All types of masonry
work. Steps, sidewalks,
patios, retaining walls,
Also additions &
alterations. Special 12x12
patio \$499. 10x12 treated
lumber deck w/railing
\$975. Free est/fully ins.
Call Sal 667-0157.

GABRIELE MASONRY

All kinds of Masonry
*Brick Work *Block
Work *Steps *Sidewalks
*Patios *Foundations
Free Estimate 753-4793

MASONRY

J & B MASONRY
CONTRACTORS
Fully Insured/Free Est.
All Types of Brick &
Block Work

*Sidewalks *Patios
*Interior *Pavers
*Foundations *Steps
Belgium Blocks *Quality
Work *Reas. Prices
*Complete Editions
661-4532

MASONRY SPECIALISTS

LaFERRIERE & SONS
*Over 2 Generations
of Exp.

*Sidewalks *Steps
*Brick Work *Plastering
*Retaining Walls
*Patios, etc.

QUALITY
WORKMANSHIP AT
REASONABLE PRICES
667-3790 or 226-0571

P. A. CARSILO &
SONS, INC.
MASONRY

*Driveways *Sidewalks
*Stairs *Plastering
*Retaining Walls
*R.R. Ties *Backhoe
*Waterproof

*Fully Ins. Free Est.
676-8390

MOVING & STORAGE

MOVING?
Call The Professionals
Residential - Commercial
7 days a week. No job too
big or too small.
CALL 478-8685
Lic. No. PM0407

MOVING & STORAGE

PAUL'S MOVING
& TRUCKING CO.
*Local & Long Distance
*Packing & Light
Deliveries
Lic. PM00667
675-6440

PAINTING



ANY 3 ROOMS
PAINTED
\$199.00
PLUS PAINT
*Fast, Clean Work
Husband & Wife Team
Sammy & Barbara
667-7440

BILL Mc DONALD
PAINTER/HANGING
Residential/Commercial
*Trained by
THE PAPERHANGING
INSTITUTE
Free Estimates 667-9834

DANISH
PAINTING CO.
*European Quality
Craftsmanship
KENNETH HANSEN
667-7614

ED STELEY
PAINTING
Complete Bathroom
Interior/Exterior
*Painting
*Staining *Varnishing
Free Estimates Fully Ins.
450-4942

PAINTING

INTERIOR
EXTERIOR
*Free Estimates
*Wall Paper Removal
*Reliable & Quality Work
Call NICK 748-6379
Fully Insured

PAINTING

To Suit Your Schedule
*Days/Nights/Weeks
*Reas. Rates *Free est.

Call Mike
235-0522

R. BURGHARDT
PAINTING &
PAPER HANGING
*OVER 20 YEARS
EXPERIENCE
*FREE ESTIMATES
BOB 667-5478

SAL & SON
Painting Contractors
*Seal Driveways
*Clean Gutters
*Wash Windows
*Minor Repairs
Call 939-4740

SAL POLIZZOTO
Painting & Decorating
*Int./Ext. *Res./Com.
Expert on Paper hanging
Call for Free Estimate
24 Hr. Serv. *Fully Ins.
939-8781

TILE CONTRACTORS

GENNA TILE
Complete Bathroom
Modernization
No job too "small"
or too "BIG"
661-5172

PLUMBING

Keep Your
Plumbing Young
J.G. YOUNG
& SONS, INC.

PLUMBING
HEATING
AUTOMATIC FIRE
SPRINKLER SYSTEMS

State License
No. 3684 & No. 990

REMODELING

*Kitchens & Bathrooms
Remodeled

*Gas Heat
*Hot Water Heaters
*Electric Sewer Cleaning
*Residential, Commercial & Industrial
Repairs
*Alterations
*New Construction

14 New St. Belleville
759-1476

TILE CONTRACTORS

JOE GRADY
Ceramic Tile Installed
*Regrouting *Repairs
*Complete Modernization
Fair Honest Prices
Free Estimate
CALL 667-1776

TREE SERVICE

ACE TREE SERVICE
*Take-Downs *Topplings
*Pruning *Planting
*Stump Grinding
*Snow Blowing
Fully Ins. Free Est.
743-0088

MOVING & STORAGE

NORTHERN VAN LINES
Residential *Free Estimates
Experienced Movers
All Furniture Padded
Commercial *Free Estimates
Shore Trips Daily
Owner On Every Job

Bloomfield, N.J. NJPM00601

(201) 743-3293

TREE SERVICE

FRIENDLY TREE SERVICE, INC.
A FAMILY BUSINESS
*Pruning & Shaping *Insured
*Ornamental Landscaping
*Emergency Service
*Removals
*Stump Grinding
*No Job Too Small
*Firewood *Free Wood Chips

744-2623

LET THERE BE PEACE ON EARTH



We Save You *more* Money For The HOLIDAYS!

Save Even More at ShopRite
Use your manufacturers' coupons along with any coupons that appear in our newspaper ads or circulars for extra savings

Happy Hanukkah To All Our Jewish Friends!

Check your Local ShopRite For Holiday Store Hours

The Produce Place

VITAMINS 'A' & 'C' FRESH
California Broccoli
14 SIZE
each **.99**

VITAMIN 'C' 88 SIZE
Sunkist Navel Oranges
Sunkist
for **6.99**

The MEATing® Place

COOK'S HAM & WATER PRODUCT 33% LESS SODIUM
Shank Portion Smoked Ham
BUTT PORTION
lb. **.99**

BEEF LOIN
Boneless Sirloin Steak
1/2 PRICE
lb. **1.99**
FRESH MUSHROOMS 10-oz. pkg. **.84**

18-OZ. PKG., FIRM RIPE ShopRite Tomatoes
ShopRite Sale Price **1.49**
LESS PRICE PLUS club Discount **.50**
YOU PAY ONLY **.99**

GREAT FOR SNACKING
Red Emperor Grapes
lb. **.99**

COOK'S HAM & WATER PRODUCT 33% LESS SODIUM
Shank Half Smoked Ham
BUTT HALF NO CENTER SLICES REMOVED
lb. **1.19**

TWIN PACK
Perdue Fresh Cornish Hens
ShopRite Sale Price **1.29**
YOU SAVE AN ADDITIONAL **1.00** PER PKG. WITH PRICE PLUS club CARD

LOW IN CALORIES, SUPER SELECT
Firm Cucumbers for **3.10**
IDEAL ROUGHAGE
Pascal Celery each **.99**
VITAMIN 'C'
Green Bell Peppers lb. **.99**
LOW IN CALORIES
Royal Purple Eggplants lb. **.79**

IMPORTED
Bing Cherries lb. **1.99**
RICH IN POTASSIUM
Golden Ripe Bananas lbs. **2.99**
RED OR WHITE, 40 SIZE
Florida Grapefruit for **3.10**
FROM ISRAEL
Imported Galia Melons each **2.99**

10-13 & 18-22-LBS. AVG.
ShopRite Frozen Turkeys 24-LBS & UP PRICED HIGHER lb. **.59**
10-13 & 18-22-LBS. AVG.
ShopRite Fresh Turkeys 24-LBS & UP PRICED HIGHER lb. **.69**
FROZEN 10-13 & 18-22-LBS
Butterball Turkeys 24-LBS & UP PRICED HIGHER lb. **.79**
FROZEN 10-13-LBS
Empire Kosher Turkeys 16-LBS & UP PRICED HIGHER lb. **.79**

CENTER CUT, OVEN READY BEEF, DECKLE REMOVED
Rib Roast or Rib Steak lb. **3.99**
U.S.D.A. CHOICE BEEF
Boneless Bottom Round Roast lb. **2.49**
3 TO 5 LB. AVG. PKG.
80% Lean Ground Beef lb. **1.39**
FRESH ALL AMERICAN, OVEN READY
Whole Leg of Lamb lb. **1.99**

The Dairy Place

QUARTERS
Blue Bonnet Margarine
1/2 PRICE
1-lb. pkg. **3.10**

The Grocery Place

REGULAR OR NO SALT ADDED
Green Giant Niblets Corn
11-oz. cans **3.10**

REG. DIET OR CAFF. FREE
2-Liter Btl. Pepsi Cola
OR MT. DEW OR SLICE Plus Dep. Where Req.
btl. **.89**

The Fresh Fish Market

STORE SLICED
Fresh Salmon Steak
FRESH WHOLE SALMON
lb. **3.99**

GRAPEFRUIT JUICE OR Florida Natural Premium 64-oz. cont. **1.99**
REGULAR OR LIGHT CHOICE
Breakstone Sour Cream 16-oz. cont. **.79**

FOR LAUNDRY
Fab Liquid Detergent 1/2-gal. btl. **1.99**
FILTER PACKS 7.1-OZ. OR REG. OR AUTO DRIIP
Maxwell House Coffee Or Lite 12 to 13-oz. can **1.69**

SEL. VAR. TRAD., THICK & HEARTY, FINO ITALIAN OR CHUNKY GARDEN, STYLE
Ragu Spaghetti Sauce 1-lb., 11.5 to 1-lb 14.5 or jar **.99**

U.S. GRADE 'A' FARM RAISED
Fresh Southern Catfish Fillet lb. **3.99**
FROZEN OR THAWED, FARM RAISED
Extra Large Shrimp 26-30 PER LB. lb. **6.99**

The Deli Place

REG., THICK OR NO SALT ADDED
Oscar Mayer Sliced Bacon
1/2 PRICE
1-lb. pkg **1.49**

SELECTED VARIETIES
Pepperidge Farm Gravy 12-oz. jar **.69**
WHERE AVAILABLE
The Fresh Bake Shoppe

YOUR CHOICE
Smucker's Grape Jelly or Jam 2-lb. jar **.99**
JUST FOR YOU WHERE AVAILABLE
The Floral Shoppe

The Appy Place

STORE SLICED, WATER ADDED
Domestic Cooked Ham
lb. **2.99**

WHY PAY MORE?
Armour Canned Ham 5-lb. can **9.99**
SEL. VAR. WIENERS OR
Oscar Mayer Beef Franks 1-lb. pkgs **2.30**

APPLE, PUMPKIN OR COCONUT CUSTARD
Assorted 10" Pies 38-oz. **3.49**
"THE BEAST"
9" Supreme Apple Pie 80-oz. **6.99**

GORGEOUS BLOOMS FOR THE HOLIDAYS
6-Inch Poinsettia for **3.10**
SAVE AN ADDITIONAL .50 WITH PRICE PLUS
Single Bloom Poinsettia 4" pot **1.49**

STORE SLICED LAND O LAKES
American Cheese lb. **2.99**
STORE SLICED, STICK OR SLICING
Carando Pepperoni 1/2 PRICE lb. **2.99**

The Frozen Foods Place

CHEESE OR BUTTER SAUCE
Green Giant Vegetables
1/2 PRICE
10-oz. pkgs **4.30**

10-CT. PIE PANS, 8 CT. RD. OR 50 CAKE PANS, 8 CT. LOAF PANS, 2-CT. FOL. ROASTER OR 2-CT. LASAGNA PANS
ShopRite Foilware 3 pkgs **5.00**
181 CHANNEL CAPABILITY, AUTO POWER, AUTO STOP 4 WEEK, 4 EVENT
Emerson VCR With Remote ea. **169.99** Limit Quant.

8.4-OZ. TUBE SEL. VAR
Aim Toothpaste Competitor's Price **2.29** OUR PRICE **1.09** YOU SAVE **1.20**
10-OZ. SEL. VAR. MOISTURIZING LOTION Competitor's Price **3.19** OUR PRICE **2.49** YOU SAVE **.70**
16-OZ. SEL. VAR. CONDITIONER OR Competitor's Price **1.69** OUR PRICE **.97** YOU SAVE **.72**
400 SPEED COLOR FILM Competitor's Price **12.99** OUR PRICE **10.99** YOU SAVE **2.00**
Kodak 35mm GC135-24

ShopRite LEMON MERINGUE, COCONUT CUSTARD, Apple or Pumpkin Pies 20 to 22-oz. pkgs **2.30**

SELECTED VARIETIES
Minute Maid Orange Juice 10 to 12-oz. can **.99**
SEL. VAR. NON-FAT
Kemp's Frozen Yogurt 1/2-gal. cont. **1.94**

1992 SCRUNCHY BEAR OR
Plush Bear With Vest each **9.99**

HEALTH & BEAUTY CARE COMPARE & SAVE
10-OZ. TUBE SEL. VAR Competitor's Price **2.29** OUR PRICE **1.09** YOU SAVE **1.20**
10-OZ. SEL. VAR. MOISTURIZING LOTION Competitor's Price **3.19** OUR PRICE **2.49** YOU SAVE **.70**
16-OZ. SEL. VAR. CONDITIONER OR Competitor's Price **1.69** OUR PRICE **.97** YOU SAVE **.72**
400 SPEED COLOR FILM Competitor's Price **12.99** OUR PRICE **10.99** YOU SAVE **2.00**
Kodak 35mm GC135-24

CLOVER OR FLAKY
Brown N'Serve ShopRite Rolls 11-oz. pkg. **.79**
REGULAR OR SANDWICH
ShopRite White Bread 22-oz. loaf **.79**

ShopRite Coupon
88 SIZE
Sunkist Navel Oranges 10 for **.99**
With This Coupon, Limit one per family. Good at any ShopRite. Sun., Dec. 13 thru Sat., Dec. 19, 1992. SAVE .66

ShopRite Coupon
MOUNTAIN DEW, SLICE OR REGULAR, DIET OR CAFFEINE FREE
2 Liter Pepsi Cola 3 **1.99** PLUS DEPOSIT WHERE REQUIRED
With This Coupon, Limit one per family. Good at any ShopRite. Sun., Dec. 13 thru Sat., Dec. 19, 1992. SAVE

ShopRite Coupon
5-LB. BAG, JACK FROST ShopRite OR
Jack Frost Granulated Sugar **.99**
With This Coupon, Limit one per family. Good at any ShopRite. Sun., Dec. 13 thru Sat., Dec. 19, 1992. SAVE 1.00

2AB0 VALUABLE COUPON WITH
1-LB 5 -OZ BOX
Pillsbury Family Brownie Mix **.99**
With This Coupon, Limit one per family. Good at any ShopRite. Sun., Dec. 13 thru Sat., Dec. 19, 1992. SAVE .20